

FACTORY BUILT HOUSES
OF
PANEL TYPE CONSTRUCTION
BY

HAWKSLEY CONSTRUCTIONS.
(BRANCH OF HAWKER SIDDELEY GROUP)
HUCCLECOTE,

GLOUCESTER.

TEL. GLOUCESTER. 21531.

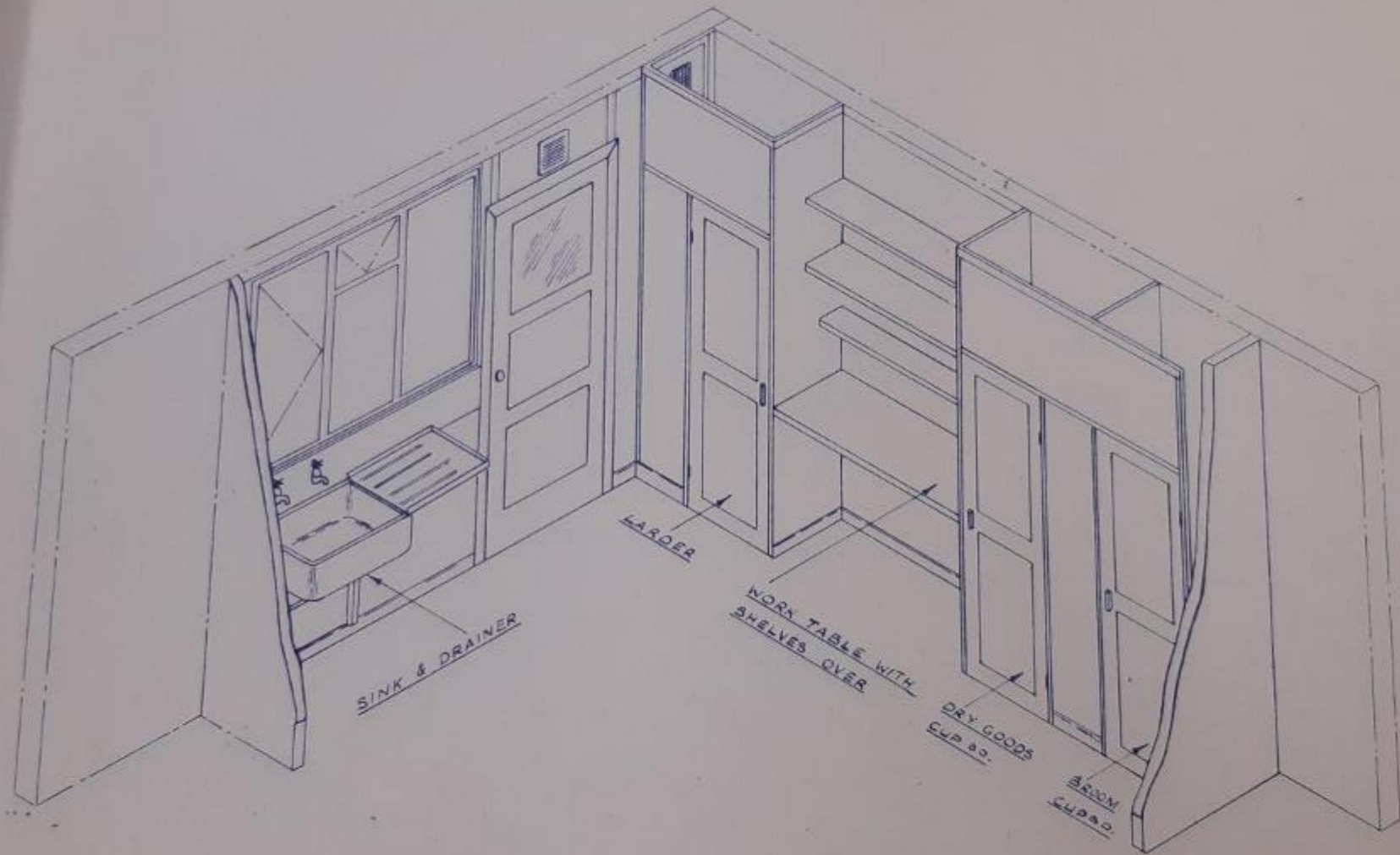


CONTENTS

- S.8029. FRONT AND REAR VIEWS OF BUNGALOW.
S.8030. PLAN.
S.8031. KEY TO WALLS AND PARTITIONS.
S.8032. VIEW OF KITCHEN EQUIPMENT.
S.8033. VIEW OF BATHROOM AND W.C. EQUIPMENT.
S.8034. WALL PANELS 1 AND 2.
S.8035. WALL PANELS 3 AND 4.
S.8036. WALL PANELS 5 AND 6.
S.8037. WALL PANELS 7 AND 8.
S.8038. WALL PANELS 9 AND 16.
S.8039. WALL PANELS 10 AND 17.
S.8040. WALL PANELS 11, 12, 13, 14 AND 15.
S.8041. PARTITION PANELS 1 AND 2.
S.8042. PARTITION PANELS 3 AND 4.
S.8043. PARTITION PANELS 5 AND 6.
S.8044. PARTITION PANELS 7 AND 8.
S.8045. PARTITION PANELS 9 AND 10.
S.8046. PARTITION PANELS 11 AND 12.
S.8047. PARTITION PANELS 13 AND 14.
S.8048. PARTITION PANEL. 15.
S.8049. PARTITION PANEL. 16 AND 17.
S.8050. ELECTRIC CIRCUIT. - LIGHTING.
S.8051. ELECTRIC CIRCUIT. - POWER.
S.8052. ELECTRIC CIRCUIT. - EARTH.
S.8053. ELECTRIC CIRCUIT. - FUSING.
S.8054. ASSEMBLY OF ROOF TRUSS.
S.8055. ASSEMBLY OF INTERMEDIATE ROOF TRUSS.
S.8056. ASSEMBLY OF GABLE END ROOF TRUSS.
S.8057. ASSEMBLY OF ROOF PANELS.
S.8058. ASSEMBLY OF GABLE END ROOF PANEL.
S.8059. ASSEMBLY OF INTERMEDIATE ROOF PANEL.
S.8060. ASSEMBLY OF CENTRE ROOF PANEL.
S.8061. ASSEMBLY OF LEFT HAND CHIMNEY ROOF PANEL.
S.8062. ASSEMBLY OF CHIMNEY ROOF PANEL, RIGHT HAND.
S.8063. PLUMBING LAYOUT.
S.8064. FIREPLACE AND SURROUND ASSEMBLY.
S.8065. INSTALLATION OF CONVECTION HEATING.

CONTENTS

- S.8029. FRONT AND REAR VIEWS OF BUNGALOW.
S.8030. PLAN.
S.8031. KEY TO WALLS AND PARTITIONS.
S.8032. VIEW OF KITCHEN EQUIPMENT.
S.8033. VIEW OF BATHROOM AND W.C. EQUIPMENT.
S.8034. WALL PANELS 1 AND 2.
S.8035. WALL PANELS 3 AND 4.
S.8036. WALL PANELS 5 AND 6.
S.8037. WALL PANELS 7 AND 8.
S.8038. WALL PANELS.9 AND 16.
S.8039. WALL PANELS 10 AND 17.
S.8040. WALL PANELS 11, 12, 13, 14 AND 15.
S.8041. PARTITION PANELS 1 AND 2.
S.8042. PARTITION PANELS 3 AND 4.
S.8043. PARTITION PANELS 5 AND 6.
S.8044. PARTITION PANELS 7 AND 8.
S.8045. PARTITION PANELS 9 AND 10.
S.8046. PARTITION PANELS 11 AND 12.
S.8047. PARTITION PANELS 13 AND 14.
S.8048. PARTITION PANEL. 15.
S.8049. PARTITION PANEL. 16 AND 17.
S.8050. ELECTRIC CIRCUIT. - LIGHTING.
S.8051. ELECTRIC CIRCUIT. - POWER.
S.8052. ELECTRIC CIRCUIT. - BATH.
S.8053. ELECTRIC CIRCUIT. - FUSING.
S.8054. ASSEMBLY OF ROOF TRUSS.
S.8055. ASSEMBLY OF INTERMEDIATE ROOF TRUSS.
S.8056. ASSEMBLY OF GABLE END ROOF TRUSS.
S.8057. ASSEMBLY OF ROOF PANELS.
S.8058. ASSEMBLY OF GABLE END ROOF PANEL.
S.8059. ASSEMBLY OF INTERMEDIATE ROOF PANEL.
S.8060. ASSEMBLY OF CENTRE ROOF PANEL.
S.8061. ASSEMBLY OF LEFT HAND CHIMNEY ROOF PANEL.
S.8062. ASSEMBLY OF CHIMNEY ROOF PANEL, RIGHT HAND.
S.8063. PLUMBING LAYOUT.
S.8064. FIREPLACE AND SURROUND ASSEMBLY.
S.8065. INSTALLATION OF CONVECTION HEATING.

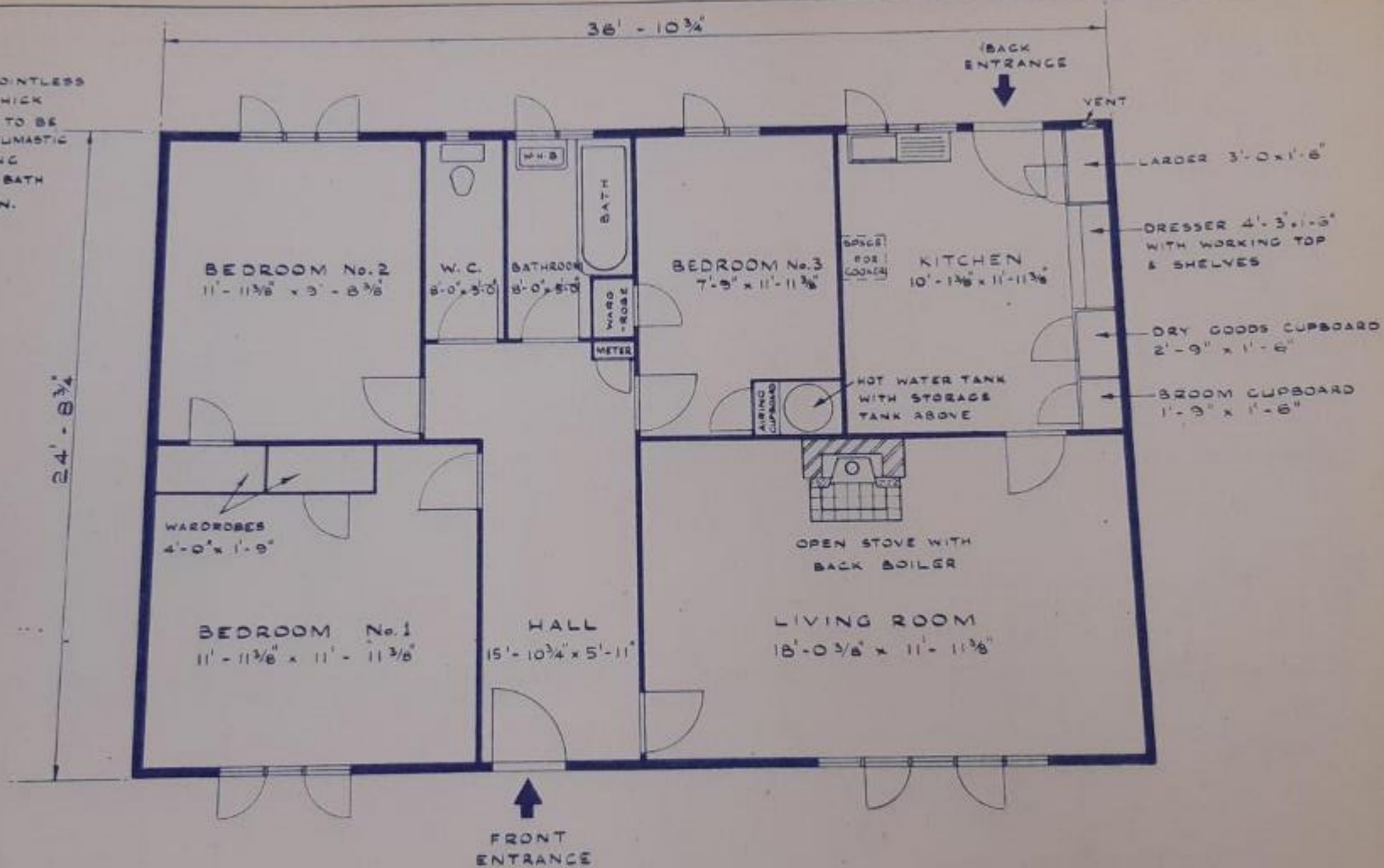


SUE			

HAWKSLEY CONSTRUCTIONS, HULLCOTE GLOUCESTER
HAWKSLEY SEMI-DETACHED BUNGALOW BLB/D. L&R. GENERAL VIEW OF KITCHEN

DRG No.
S. 8032

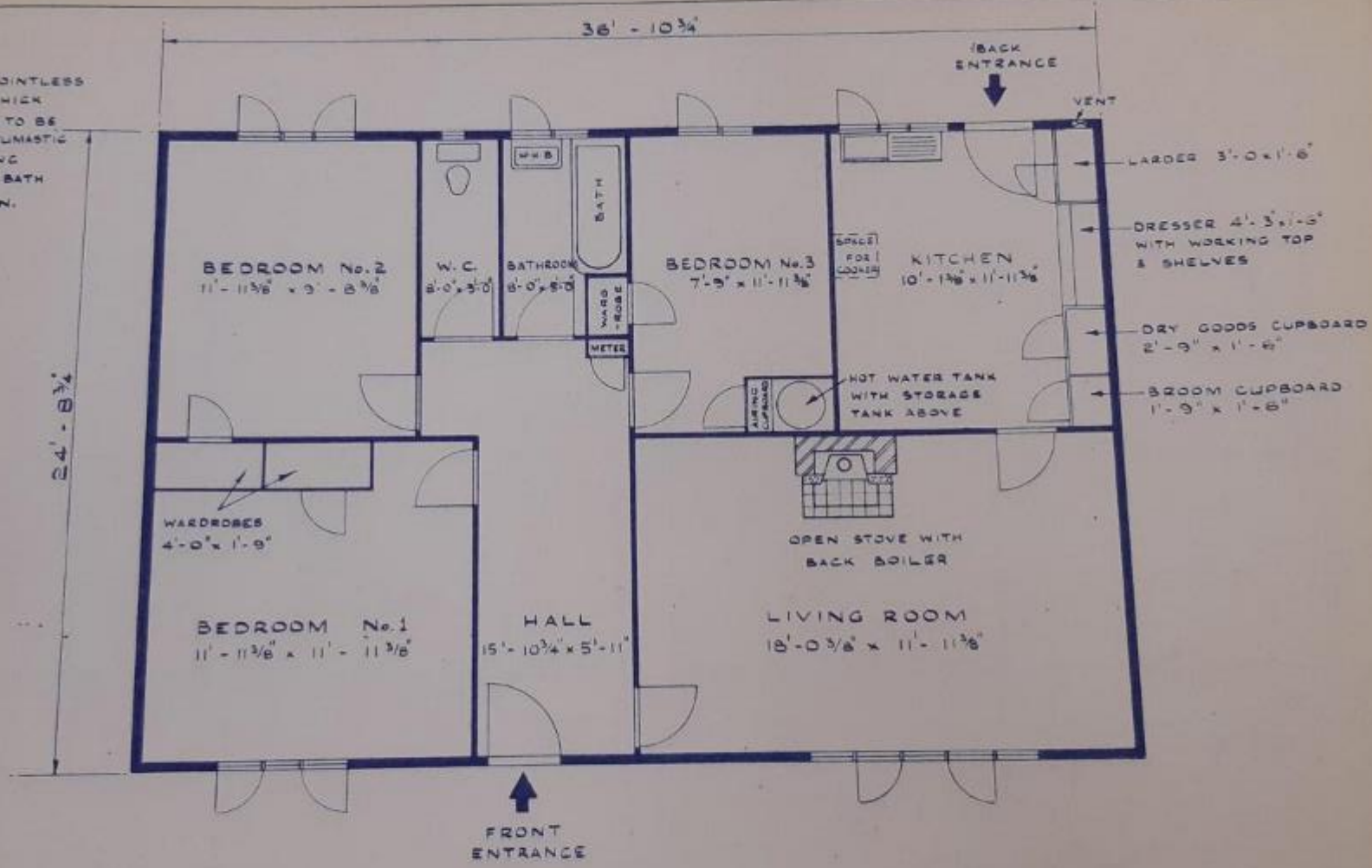
DOOR
BLACK OR BROWN JOINTLESS
STYREMASTIC 5/8" THICK
AREA UNDER BATH TO BE
COATED WITH A BITUMASTIC
WATERPROOF SEALING
COMPOUND BEFORE BATH
IS PLACED IN POSITION.



PLAN

BLB/D.R AS DRAWN
BLB/D.L OPP. HAND

DOOR
BLACK OR BROWN JOINTLESS
BITUMASTIC 5/8" THICK
AREA UNDER BATH TO BE
COATED WITH A BITUMASTIC
WATERPROOF SEALING
COMPOUND BEFORE BATH
IS PLACED IN POSITION.



PLAN

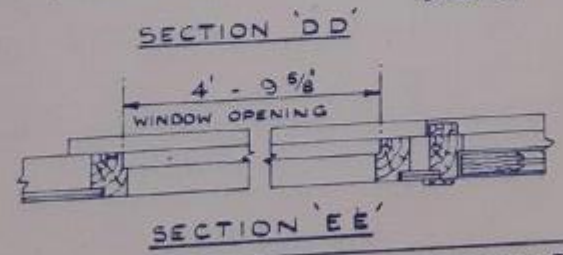
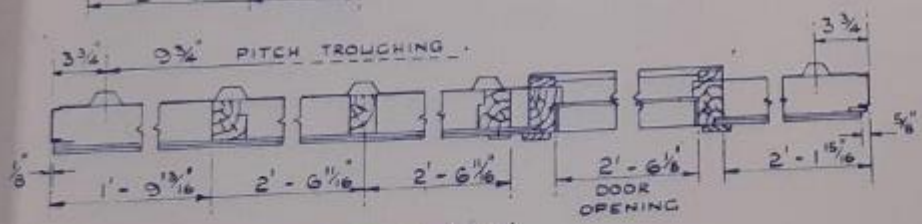
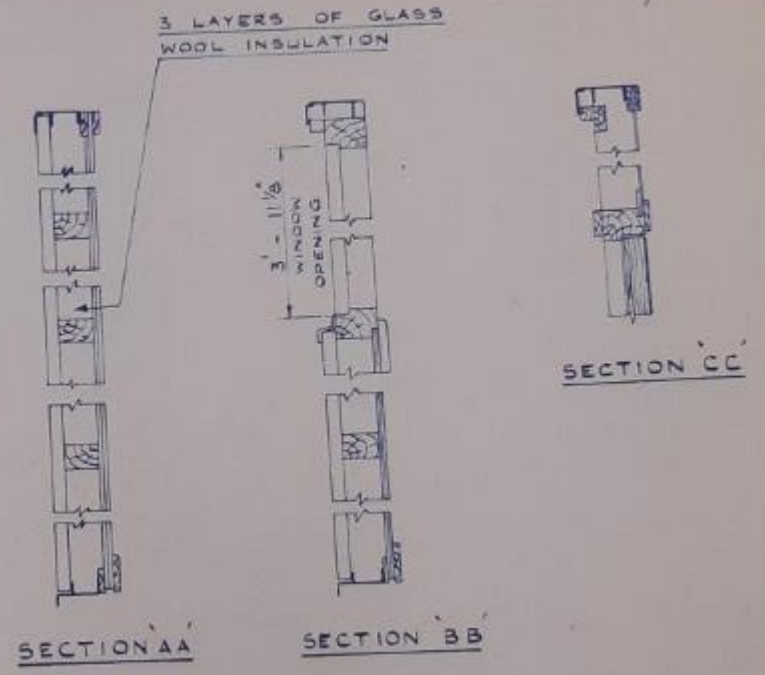
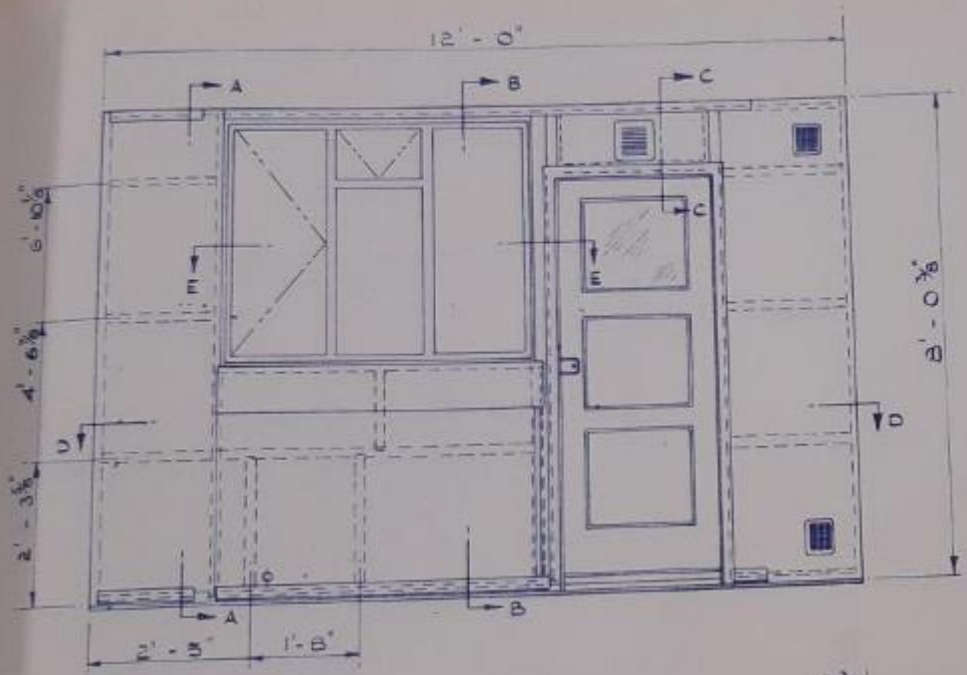
BLB/D.R AS DRAWN
BLB/D.L OPP. HAND

ISSUE	NO.	DATE

HAWKSLEY CONSTRUCTIONS. HUCCLECOTE GLOUCESTER.
HAWKSLEY SEMI-DETACHED BUNGALOW BLB/D L & R. GENERAL DETAIL PLAN

DRG No.
S. 8030

354.631/-



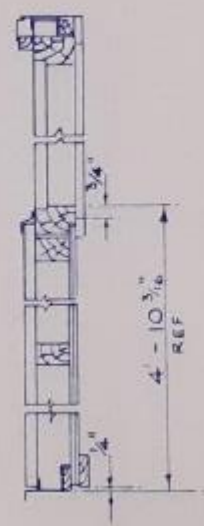
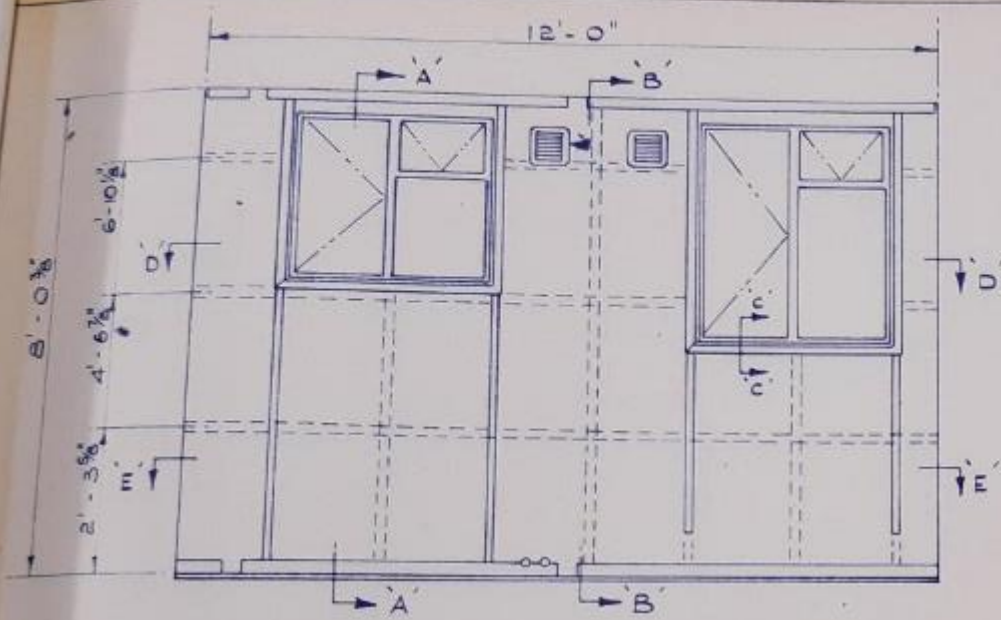
WINDOW No. ND4F.

ISSUE	

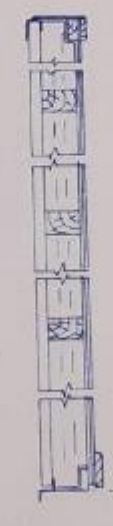
HAWKSLEY CONSTRUCTIONS. HULLCOTE, GLOUCESTER
 HAWKSLEY SEMI-DETACHED BUNGALOW BL 8/D L&R. WALL 2 AS DRAWN, WALL 1 OPP. HAND

DRG
 S. 8034

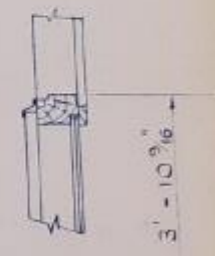
359.593/-



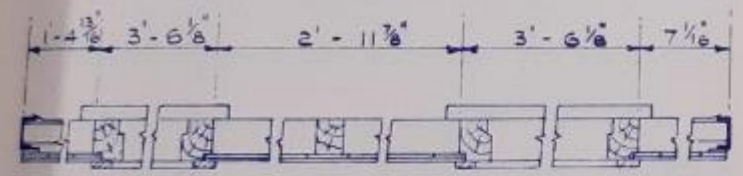
SECTION AA



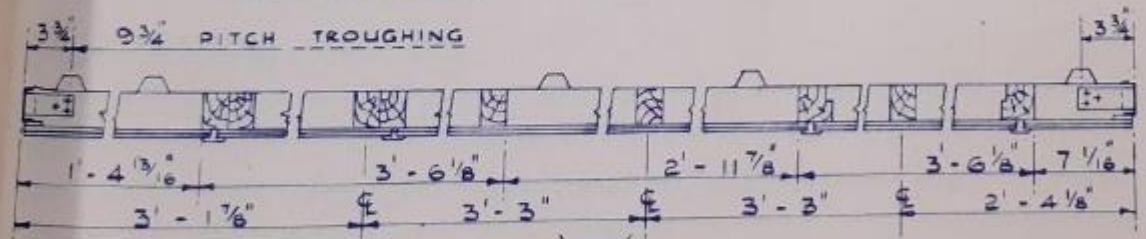
SECTION BB



SECTION CC



SECTION DD



SECTION EE

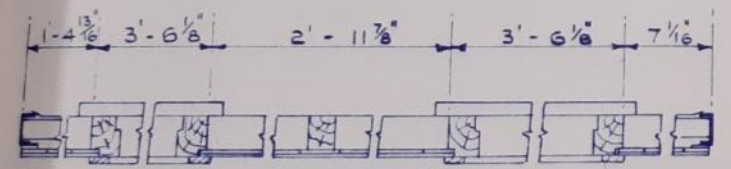
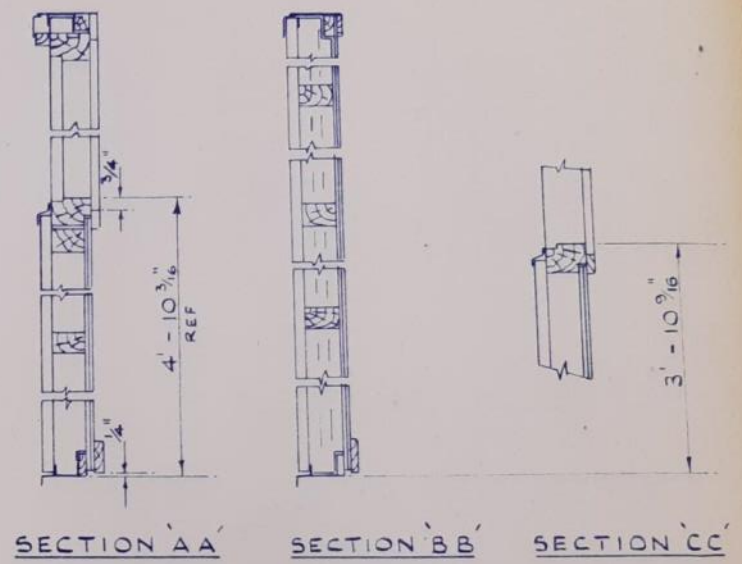
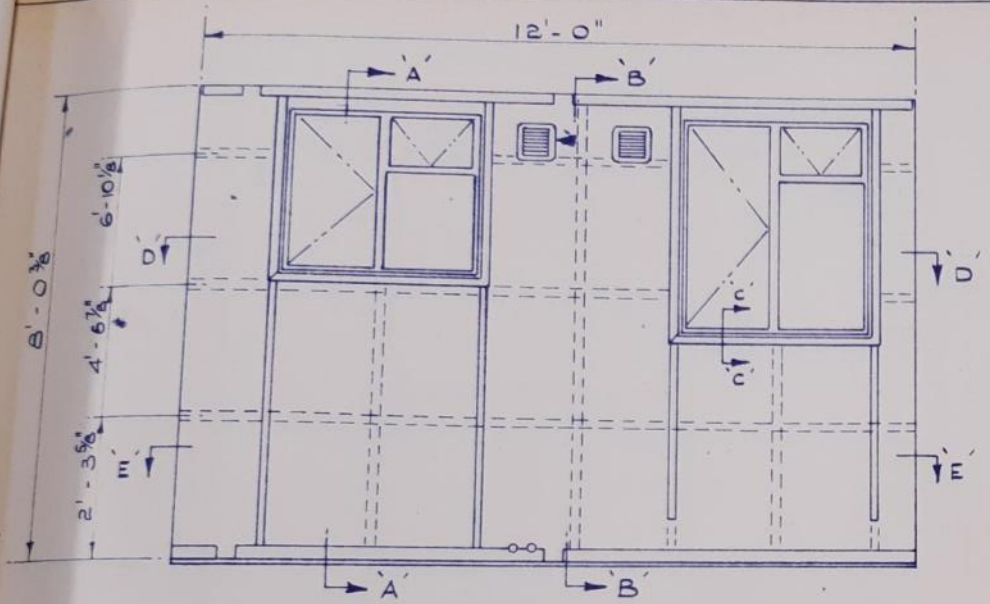
WINDOW Nos NCRF & NDRF.

ISSUE				

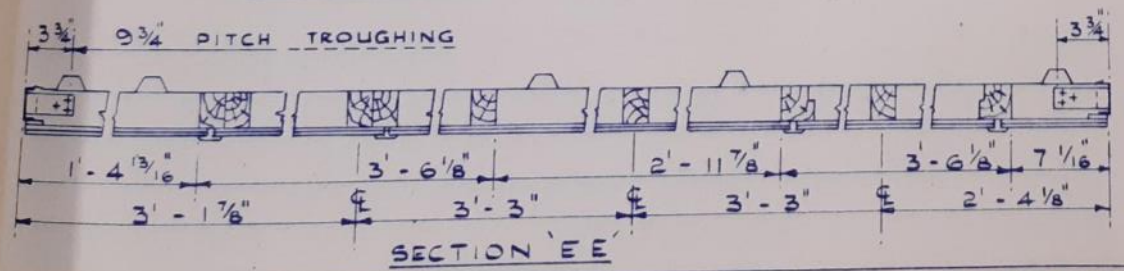
HAWKSLEY CONSTRUCTIONS. HUCCLECOTE GLOUCESTER
 HAWKSLEY SEMI-DETACHED BUNGALOW BLB/D.L&R. WALL + AS DRAWN. WALL 3 OPP HAND

DWG No
 S. 8035

359.593/-



SECTION DD



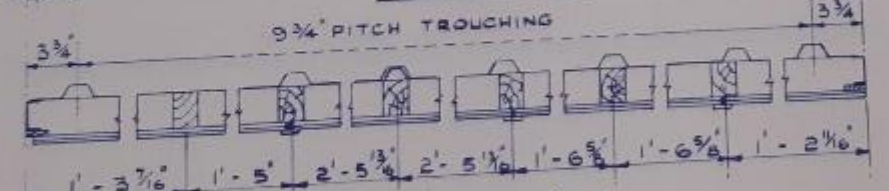
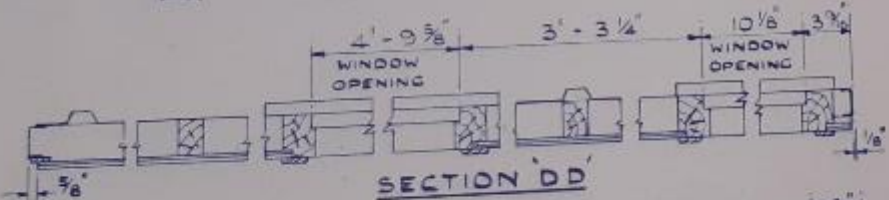
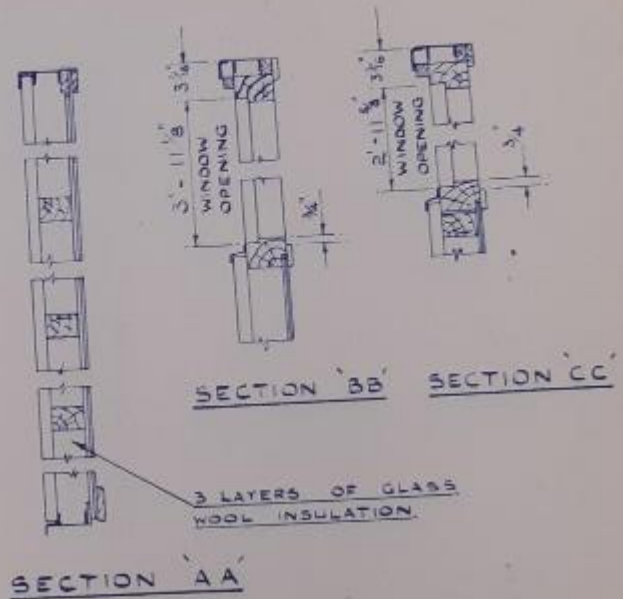
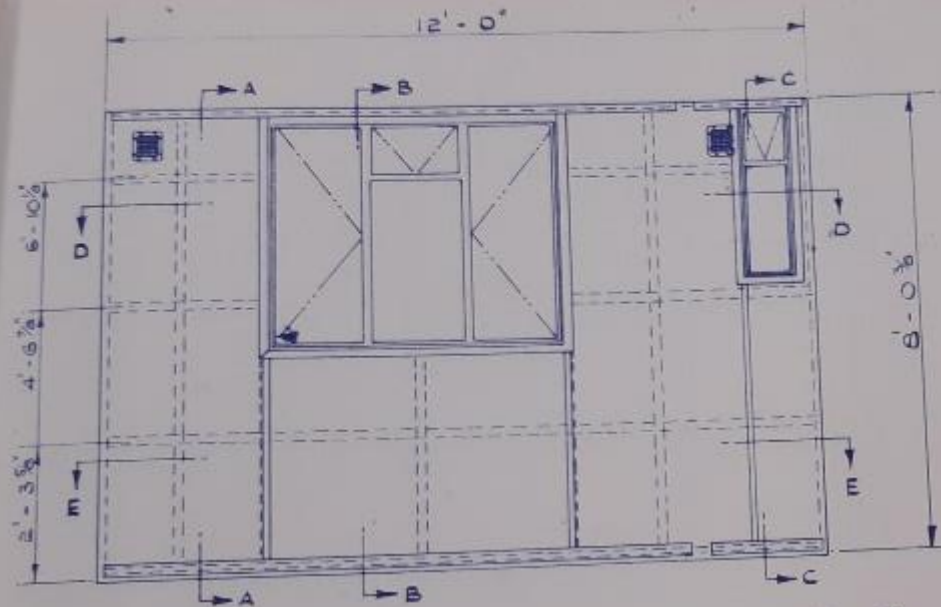
SECTION EE

WINDOW Nos NCRF & NDRF

ISSUE				

HAWKSLEY CONSTRUCTIONS. HUCCLECOTE GLOUCESTER
 HAWKSLEY SEMI-DETACHED BUNGALOW BLB/D.L&R. WALL 4 AS DRAWN. WALL 3 OPP HAND

DWG No
S. 8035



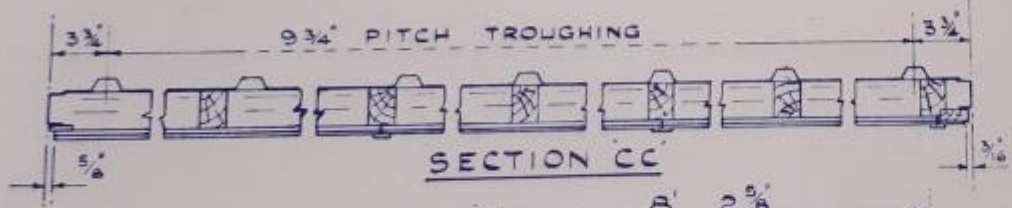
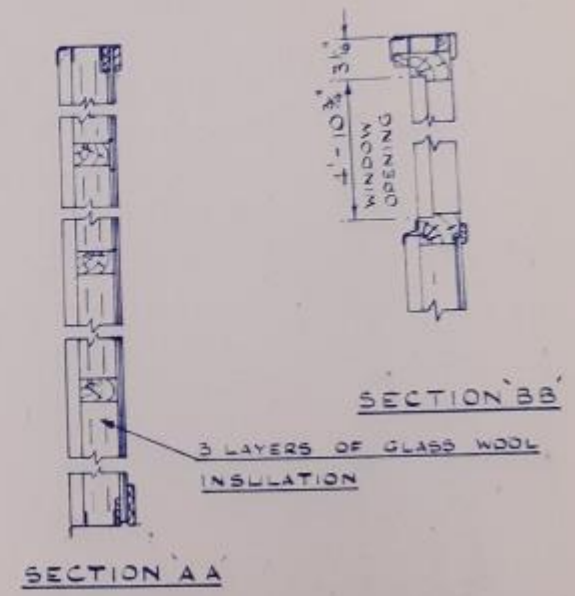
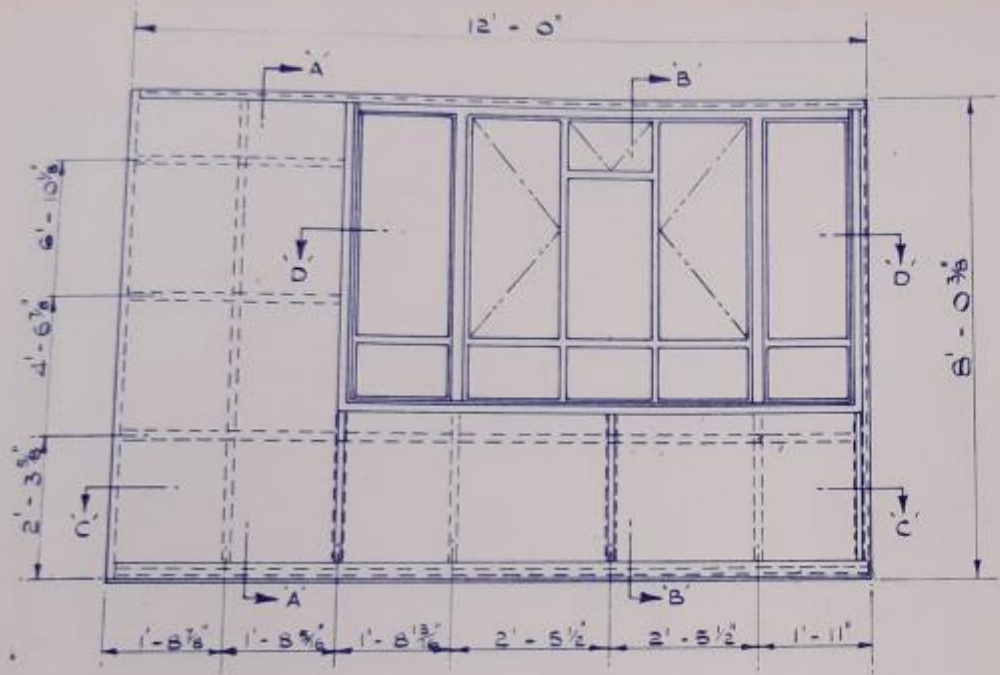
WINDOWS Nos ND 4F & NC 6F.

ISSUE				

HAWKSLEY CONSTRUCTIONS, HULLCOTE, GLOUCESTER.
 HAWKSLEY SEMI-DETACHED BUNGALOW BLB/D. WALL 6 AS DRAWN, WALL 5 OPP. HAND.

DRG No.
S 8036

372.048/-



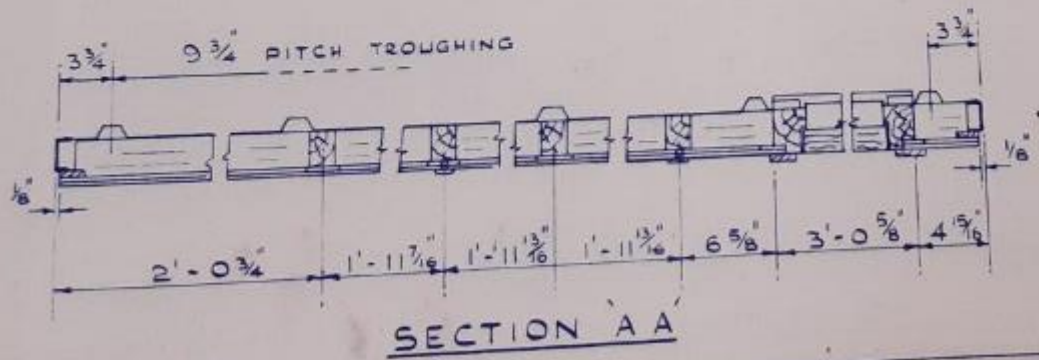
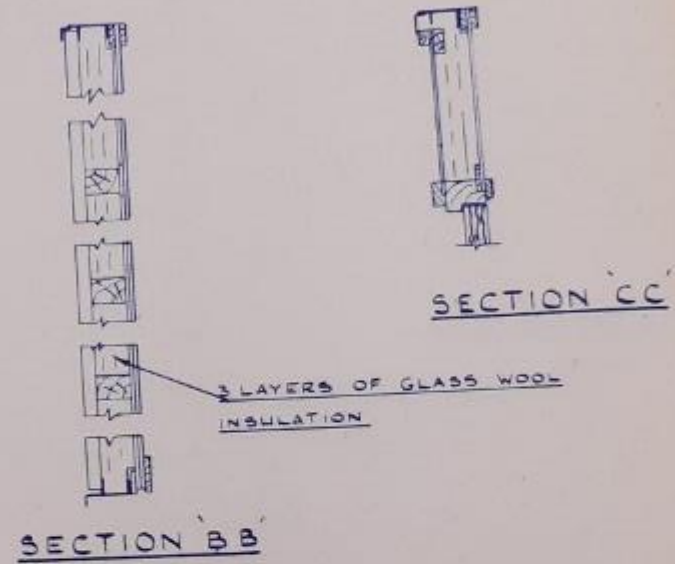
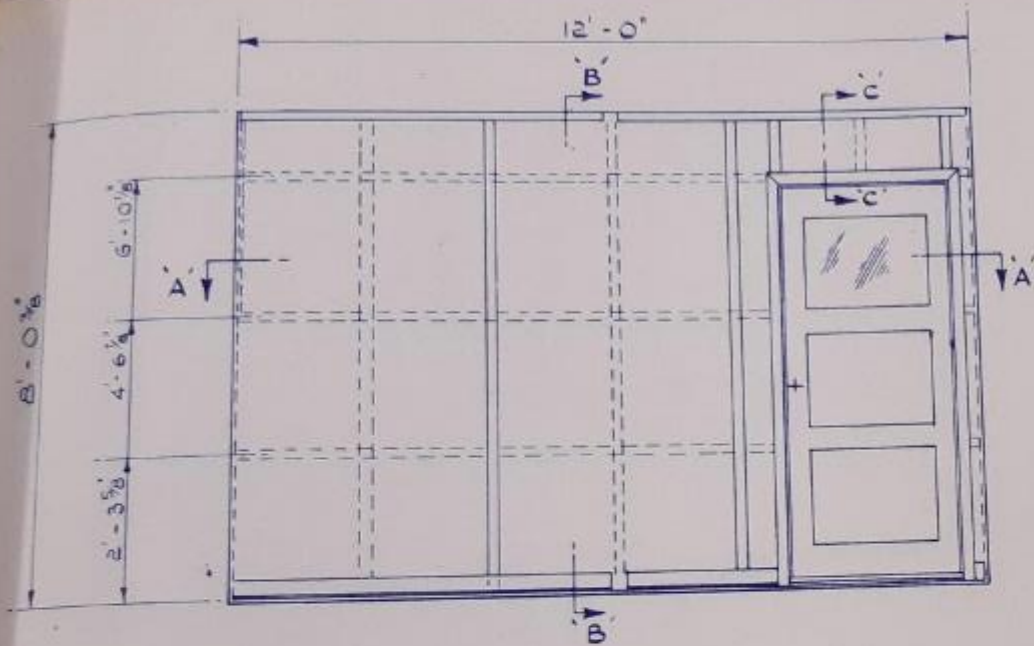
WINDOW Nos. NDV4F/S & NDV5/S

ISSUE

HAWKSLEY CONSTRUCTIONS. HUCCLECOTE, GLOUCESTER.
 HAWKSLEY SEMI-DETACHED BUNGALOW 3LB/D. WALL 16 AS DRAWN. WALL 9 OPR. HAND

DRG No.
5.8038

329.623/-

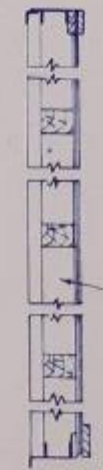
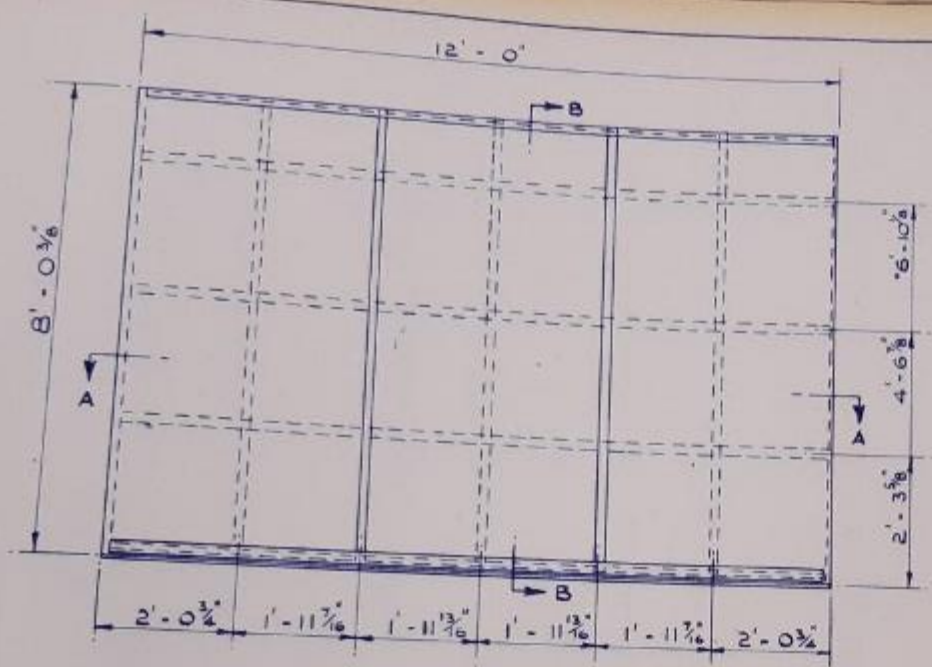


ISSUE

HAWKSLEY CONSTRUCTIONS. HUCCLECOTE, GLOUCESTER.
HAWKSLEY SEMI-DETACHED BUNGALOW BLB/D. WALL WB AS DRAWN. WALL W7 OPP. HAND.

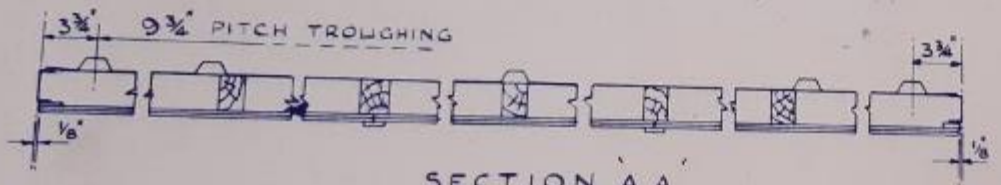
DRG No.
S.8037

269.1064



3 LAYERS OF GLASS
WOOL INSULATION

SECTION BB



SECTION AA

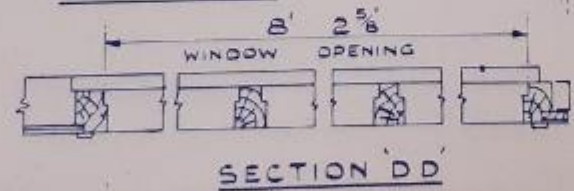
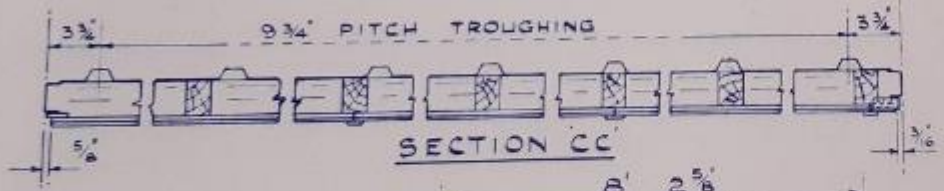
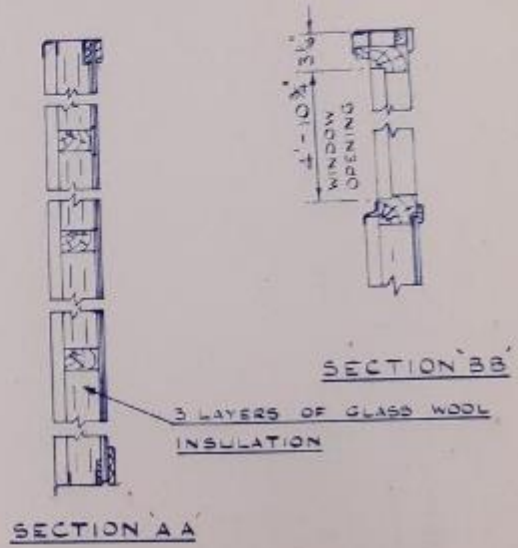
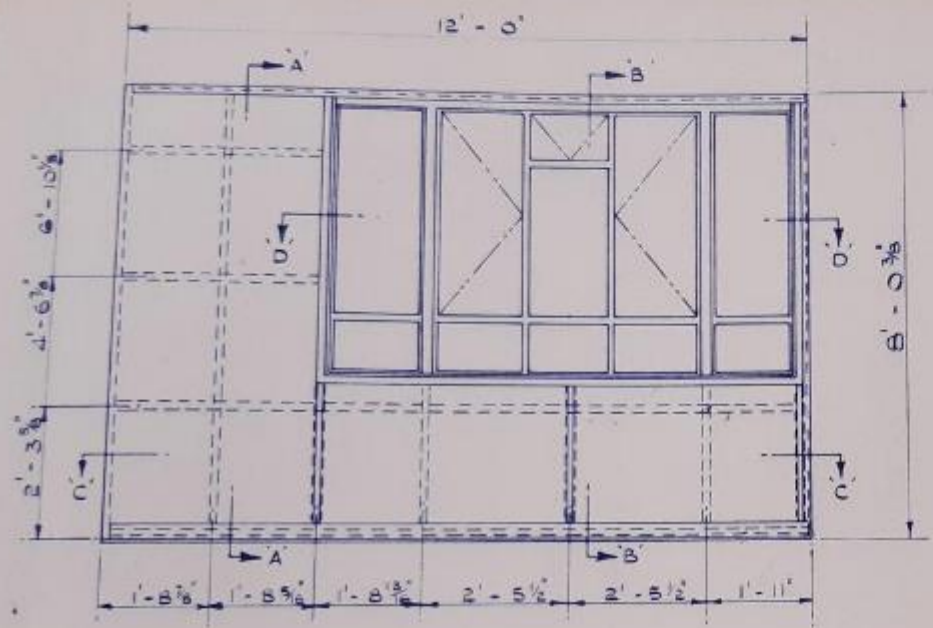
- WALL 14 AS DRAWN BUT WITH CUTOUT IN PICTURE RAIL & SKIRTING ON R.H. SIDE FOR WARDROBE.
- WALL 13 OPP. HAND TO WALL 14.
- WALL 15 AS DRAWN.
- WALL 12 AS DRAWN BUT WITH CUTOUTS IN PICTURE RAIL & SKIRTING ON R & LH SIDES FOR LARDER, DRY-GOODS & BROOM CUPBOARD.
- WALL 11 OPP HAND TO WALL 12.

ISSUE	
A	

HAWKSLEY CONSTRUCTIONS. HUCCLECOTE, GLOUCESTER.
HAWKSLEY SEMI-DETACHED BUNGALOW 3LB/D.

DRG No.
S.8040

372:048/-



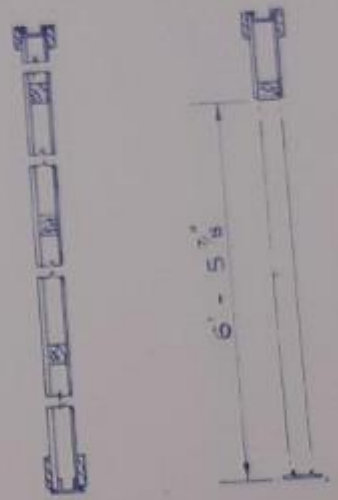
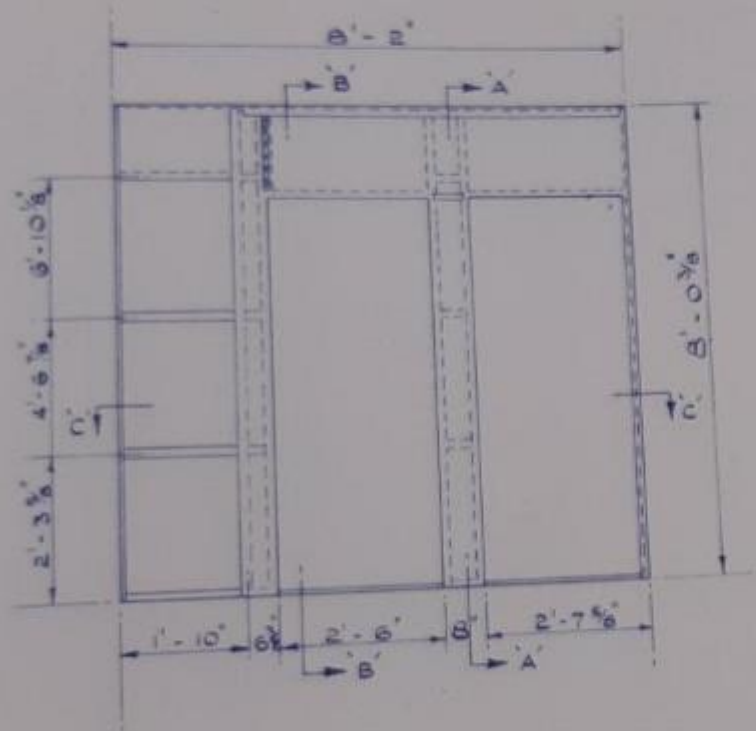
WINDOW Nos. NDV4F/S & NDV5/B

ISSUE

HAWKSLEY CONSTRUCTIONS. HUCCLECOTE, GLOUCESTER.
 HAWKSLEY SEMI-DETACHED BUNGALOW BLB/D. WALL 16 AS DRAWN. WALL 9 OPR HAND

DRG No.
 S. 8038

180.880/-



SECTION AA

SECTION BB



SECTION CC

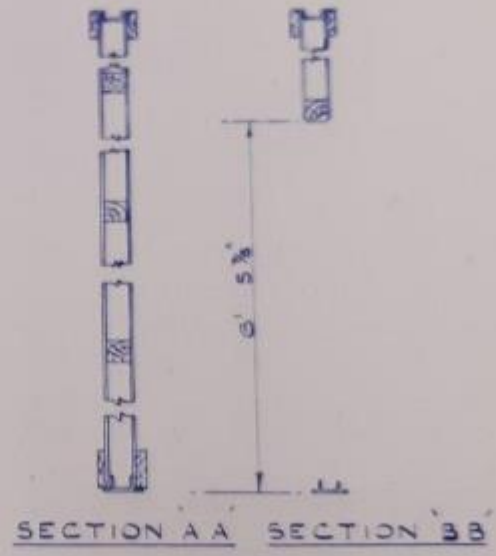
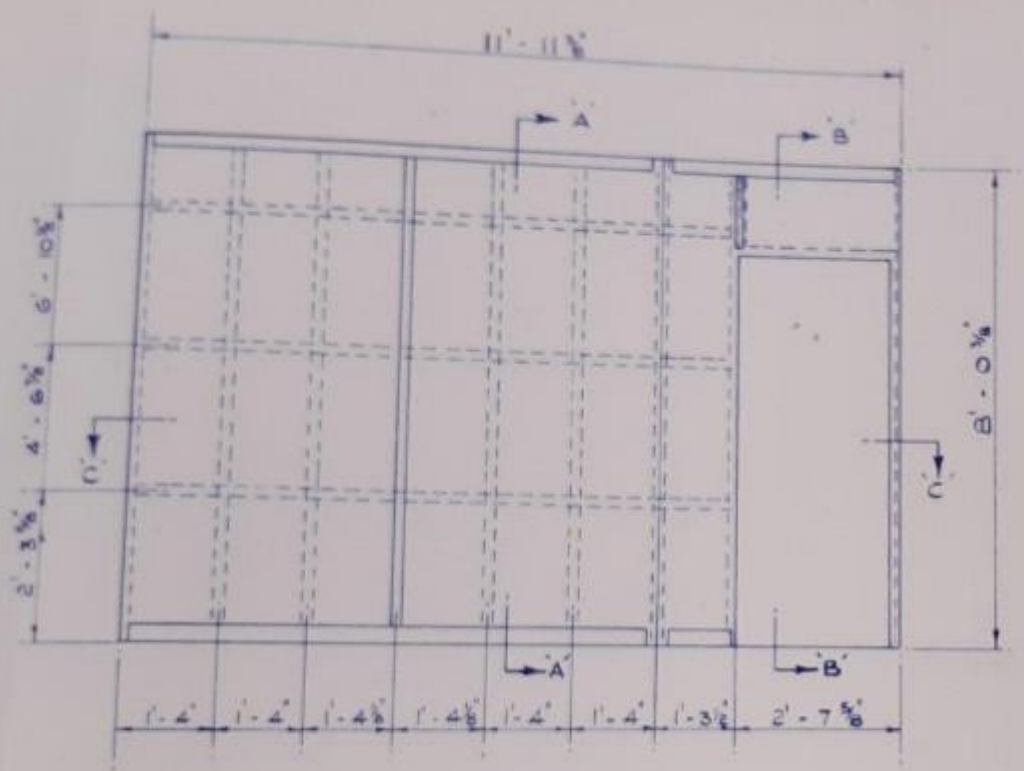
HAWKSLEY CONSTRUCTIONS.
HAWKSLEY SEMI-DETACHED BUNGALOW

HUCCLECOTE, GLOUCESTER.
BLB/D. PARTITION B AS DRAWN. PART C & D OPP. HAND

DRG No.
S.8043

ISSUE					

1251060f

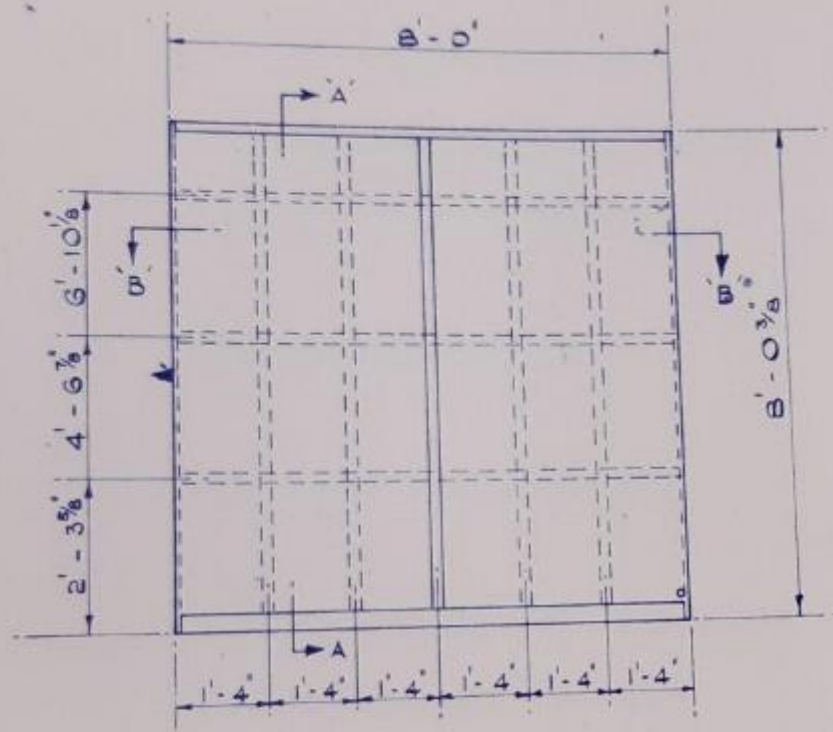


ISSUE					

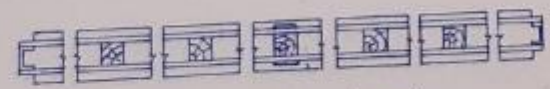
HAWKSLEY CONSTRUCTIONS, HUCCLECOTE, GLOUCESTER.
 HAWKSLEY SEMI-DETACHED BUNGALOW BLB/D. PARTS 7 AS DRAWN. PARTS 8 OPP. HAND

DRG No.
S. 8044

87-57d-



SECTION A-A

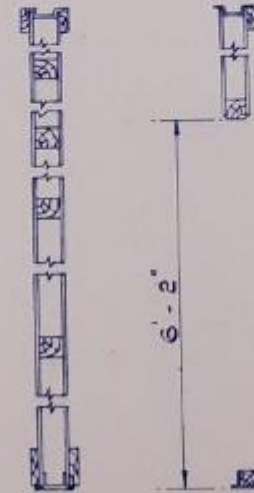
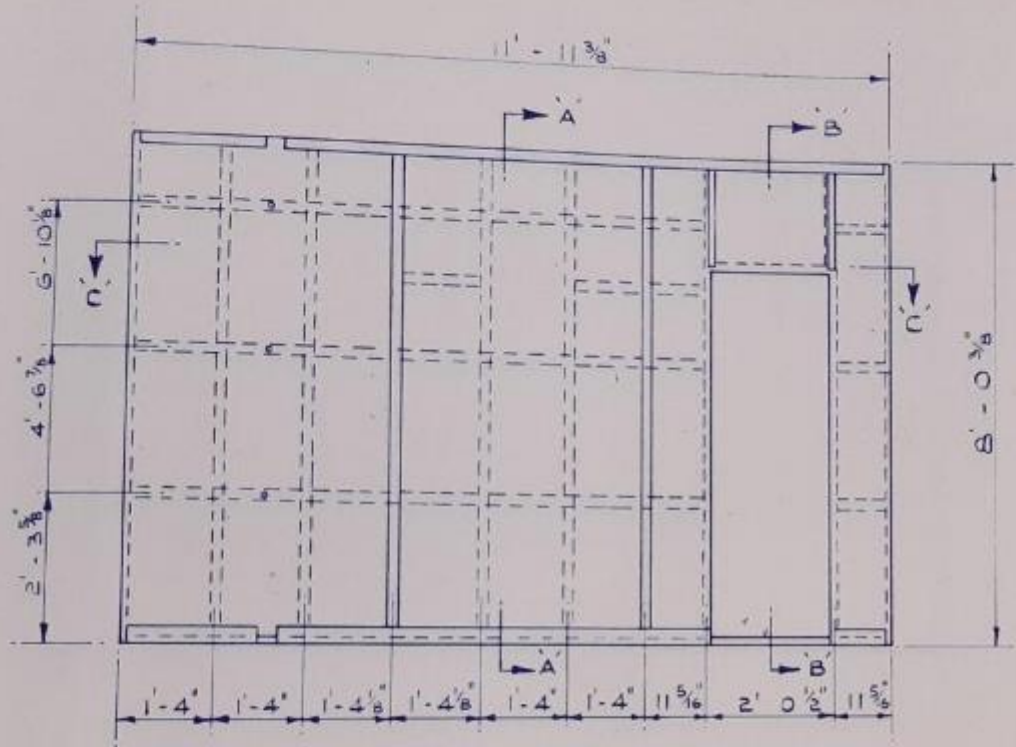


SECTION B-B

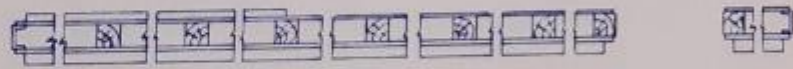
HAWKSLEY CONSTRUCTIONS. HUCCLECOTE, GLOUCESTER.
HAWKSLEY SEMI-DETACHED BUNGALOW BL B/D PARTITION No. 15.

DRG No.
5.8048

142-368/-



SECTION AA SECTION BB

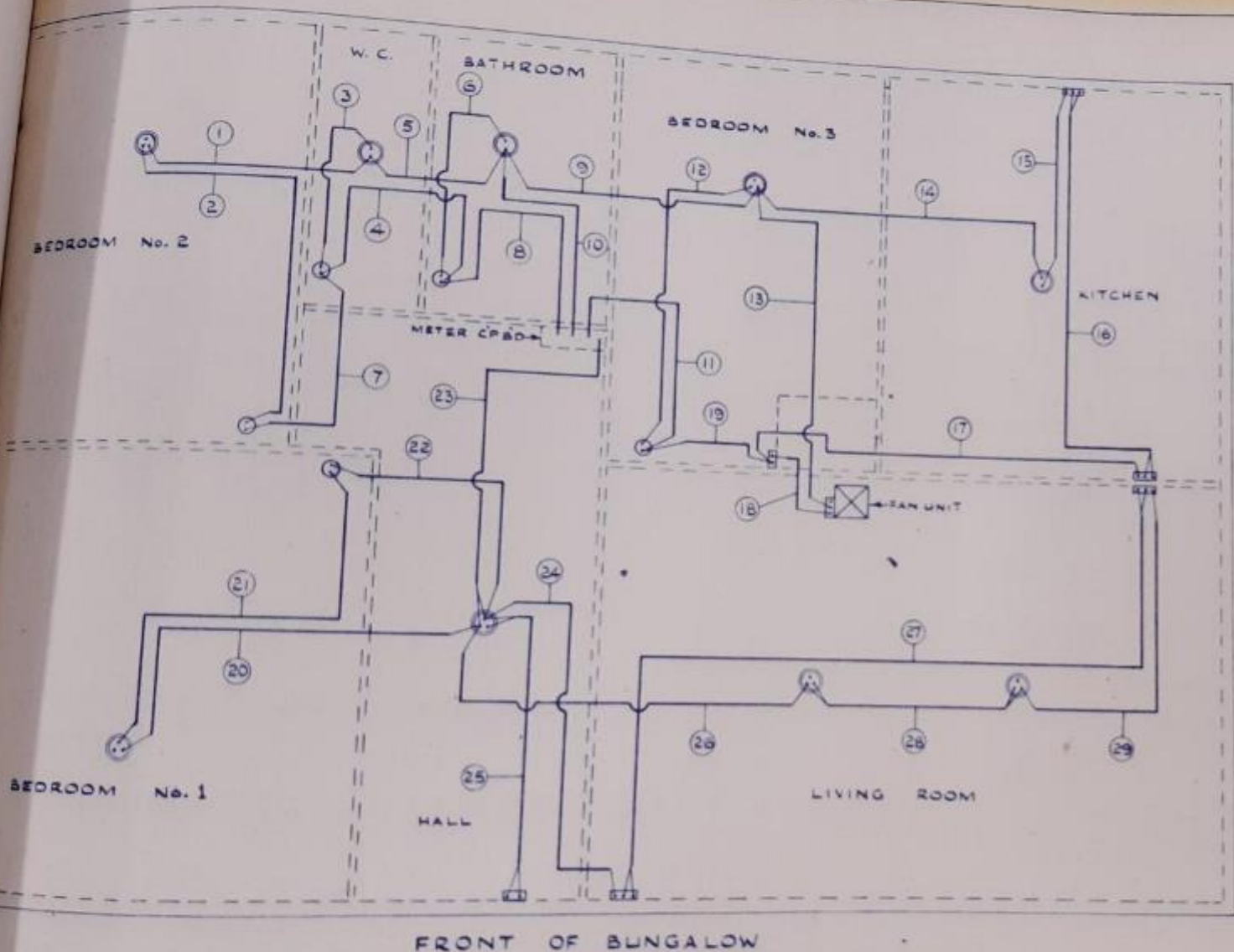


SECTION CC

ISSUE
A

HAWKSLEY CONSTRUCTIONS. HUCCLECOTE, GLOUCESTER.
HAWKSLEY SEMI-DETACHED BUNGALOW BLB/D. PART 12. AS DRAWN. PART 11 OPP. HAND

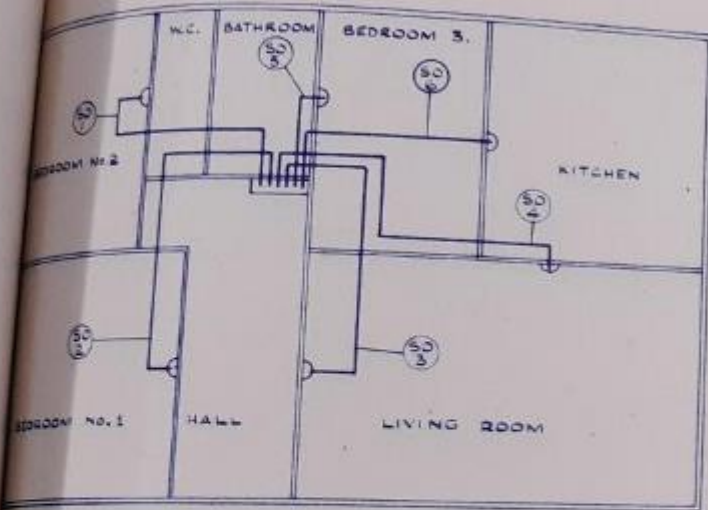
DRC No.
5.8046



- KEY
- ⊙ 3 PLATE CEILING ROSE
 - ⊙ 2 PLATE BATTEN HOLDER
 - ⊙ CEILING TYPE PULL SWITCH
 - ⊞ TWO WAY WALL SWITCH
 - ⊞ ONE WAY WALL SWITCH
 - ⊞ FAN UNIT 230/250V
SINGLE PHASE 50.~
CURRENT

FAN CABLE TRS. 3/020
LIGHTING CABLE TRS. 3/020

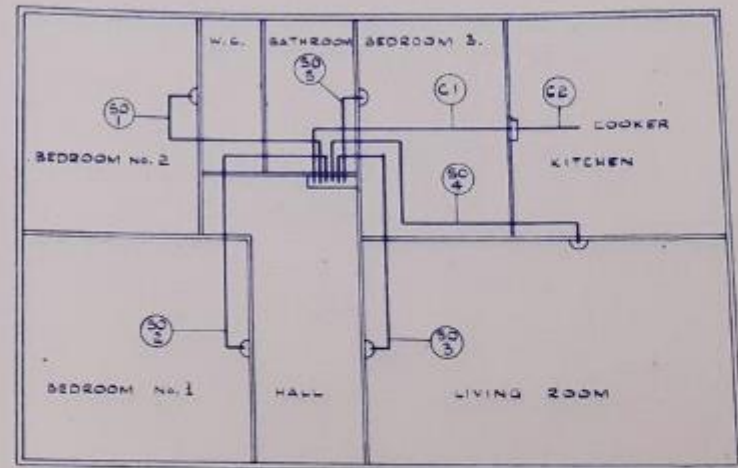
HAWKSLEY CONSTRUCTIONS. HUCCLECOTE, GLOUCESTER. DRG No S. 8050
 HAWKSLEY SEMI-DETACHED BUNGALOW 3LB/D L&R GENERAL ARRANGEMENT OF LIGHTING CIRCUIT.



POWER CIRCUIT - GAS & ELECTRIC.

CABLES :-

POWER FEEDS TRS TWIN CORE 7/029.



POWER CIRCUIT - ALL ELECTRIC

CABLES :-

COOKER FEEDS TRS TWIN CORE 7/044

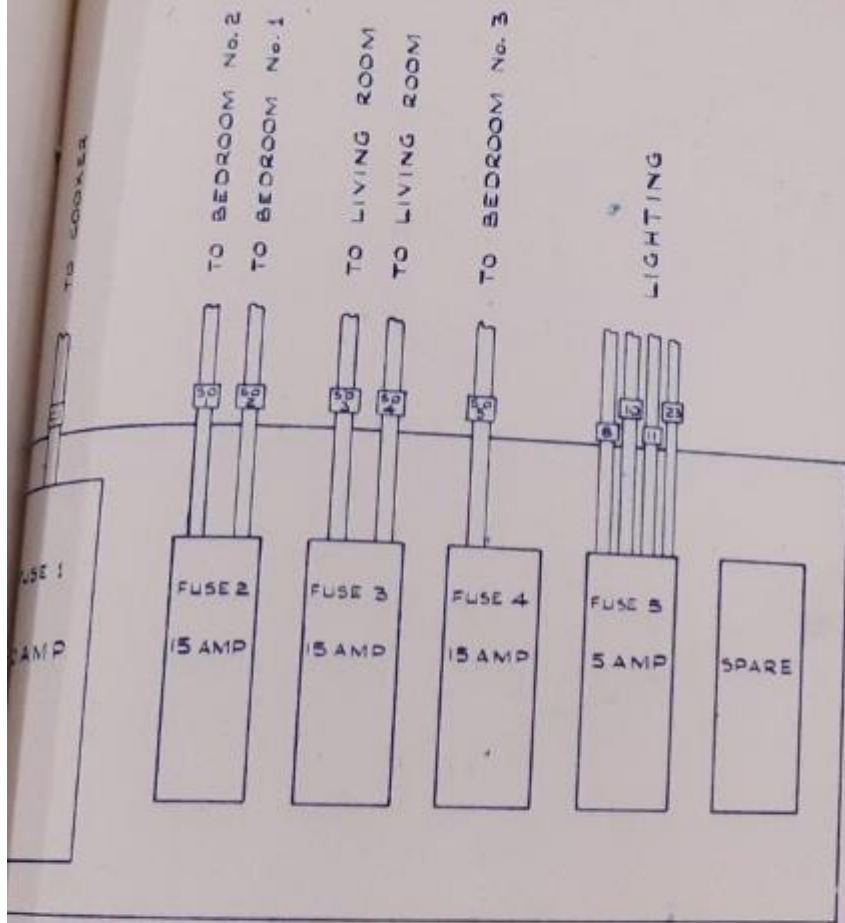
POWER FEEDS TRS TWIN CORE 7/029

HAWKSLEY CONSTRUCTIONS. HUCCLECOTE, GLOUCESTER.

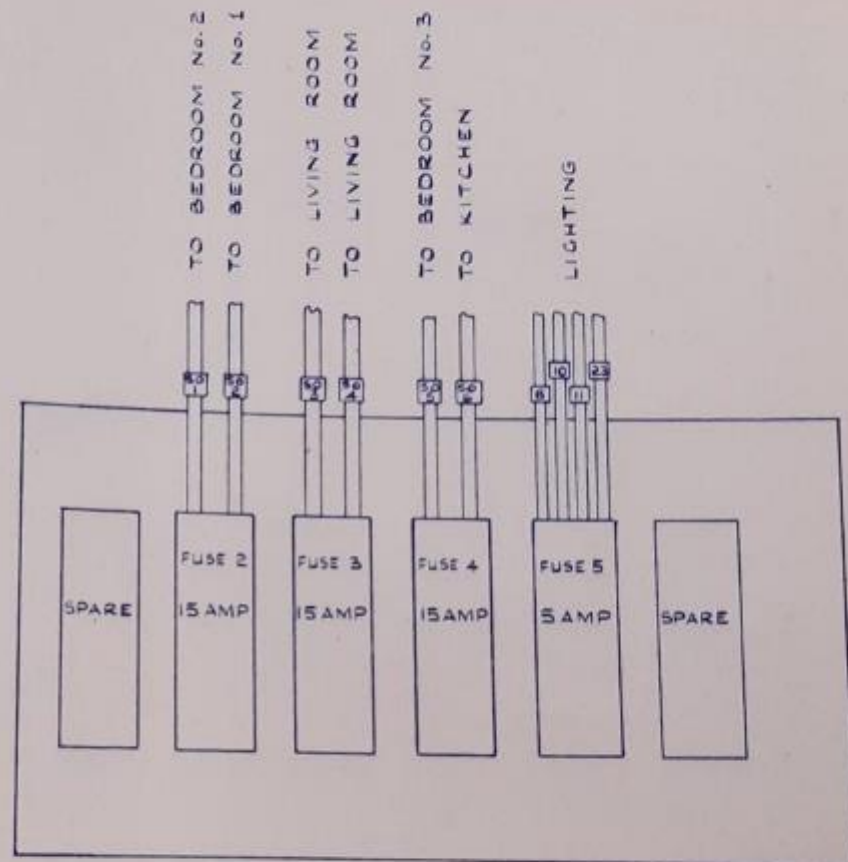
HAWKSLEY SEMI-DETACHED BUNGALOW, BLB/D. L&R. GENERAL ARRANGEMENT OF POWER CIRCUIT

DRG No.

S. 8051.

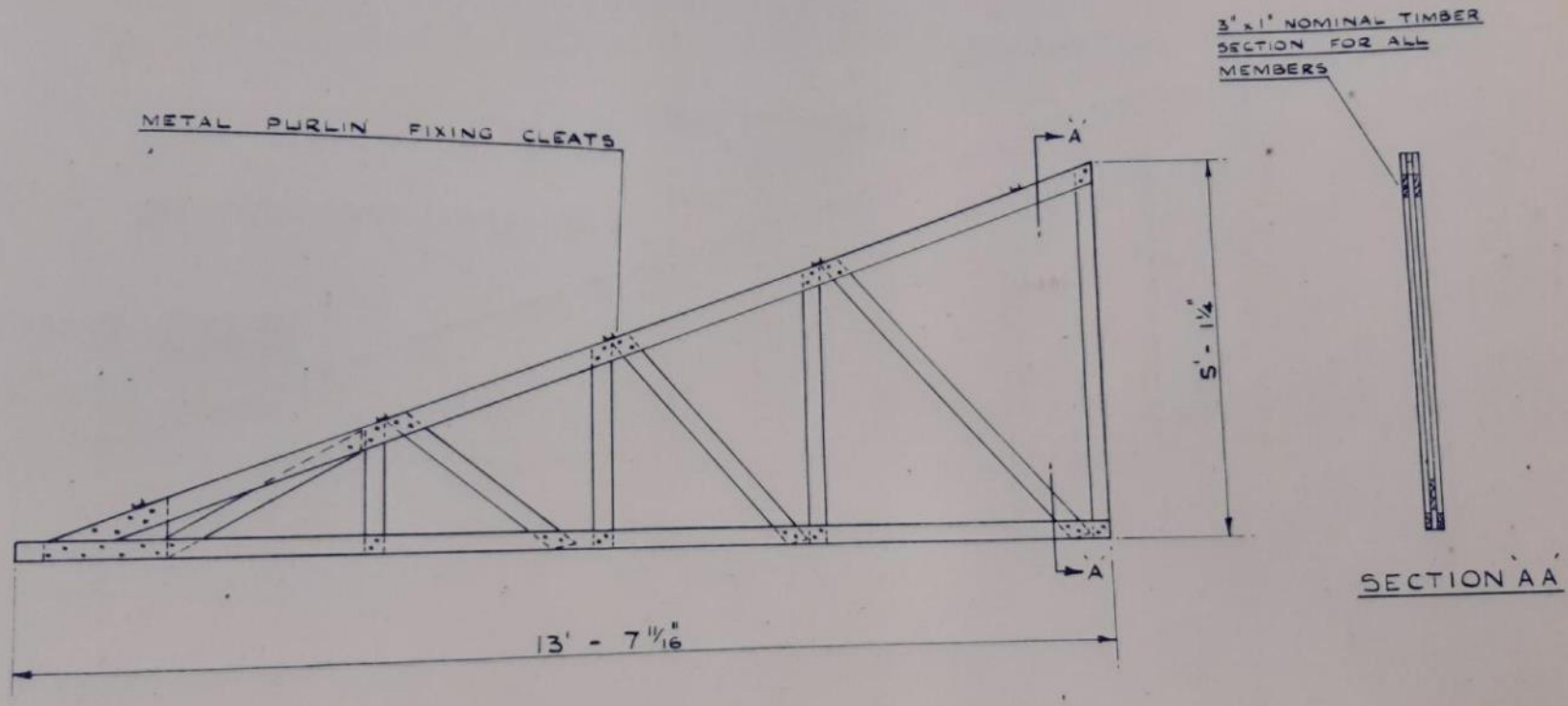


ALL ELECTRIC

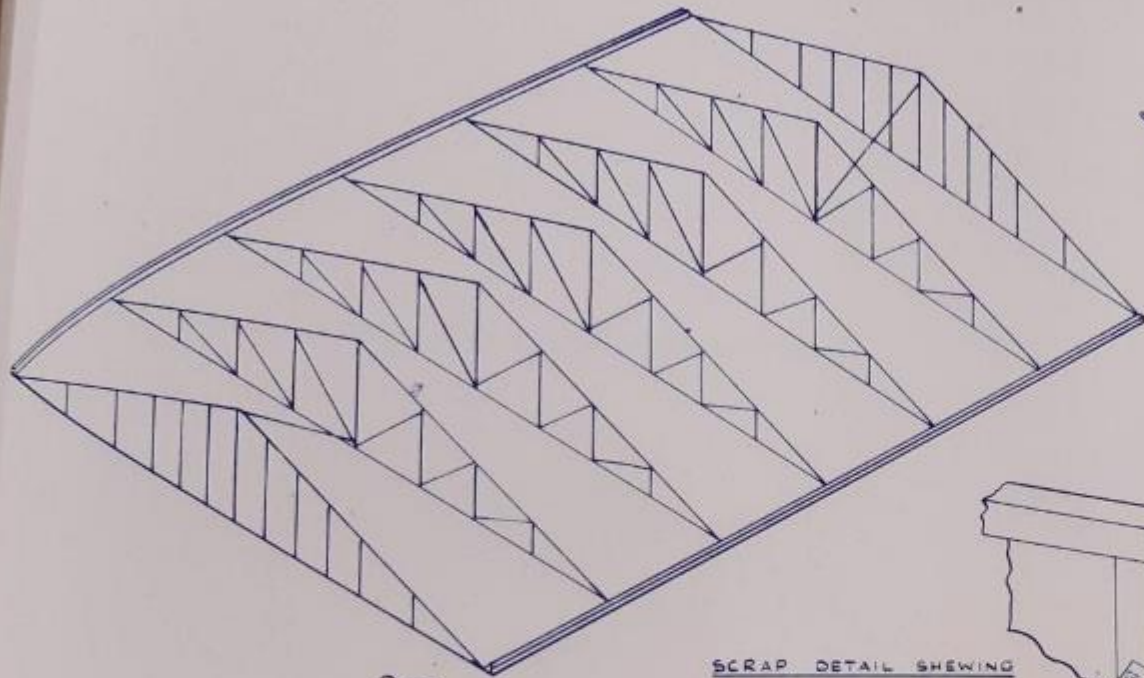


GAS & ELECTRIC

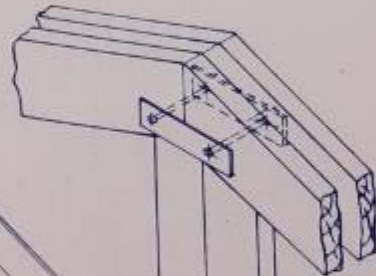
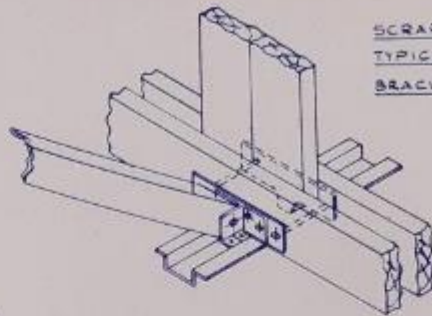
25-168/-



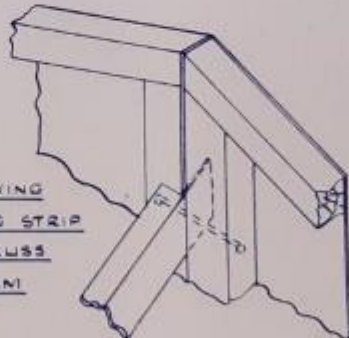
ISSUE	HAWKSLEY CONSTRUCTIONS. HUCCLECOTE, GLOUCESTER. HAWKSLEY SEMI-DETACHED BUNGALOW BL 8/D. ASSY OF INTERMEDIATE HALF ROOF TRUSS.	DRG No.
		5.8055



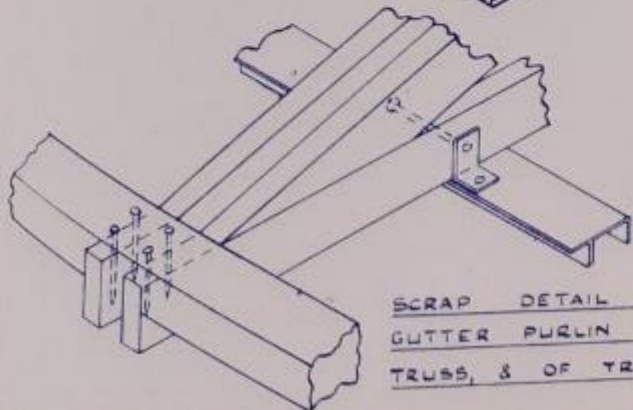
SCRAP DETAIL SHEWING
TYPICAL FIXING OF TIE &
BRACING STRIP (BOTTOM)



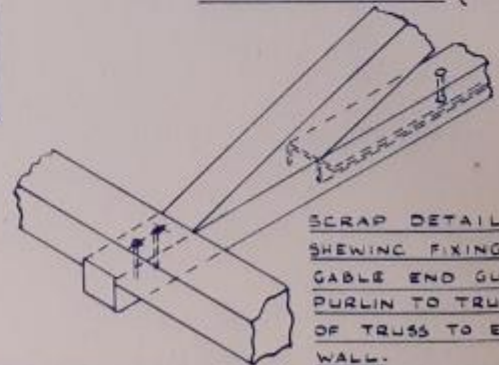
SCRAP DETAIL SHEWING
TYPICAL FIXING OF TIE
PLATE AT TRUSS (TOP)



SCRAP DETAIL SHEWING
FIXING OF BRACING STRIP
TO GABLE END TRUSS
TOP NOTE:- BOTTOM
FIXING IDENTICAL.



SCRAP DETAIL SHEWING FIXING OF
GUTTER PURLIN TO INTERMEDIATE
TRUSS, & OF TRUSS TO WALL.



SCRAP DETAIL
SHEWING FIXING OF
GABLE END GUTTER
PURLIN TO TRUSS &
OF TRUSS TO END
WALL.

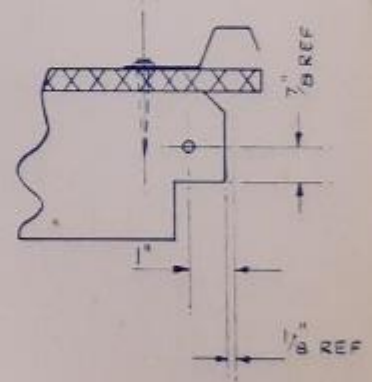
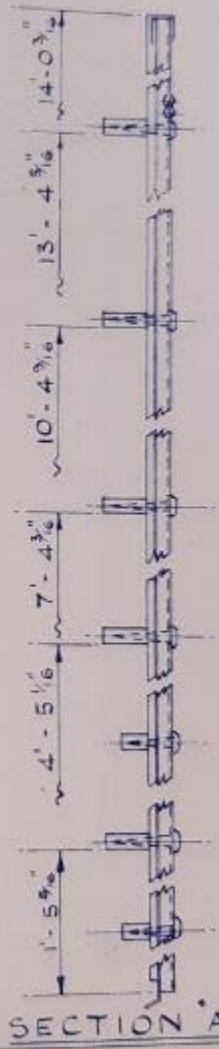
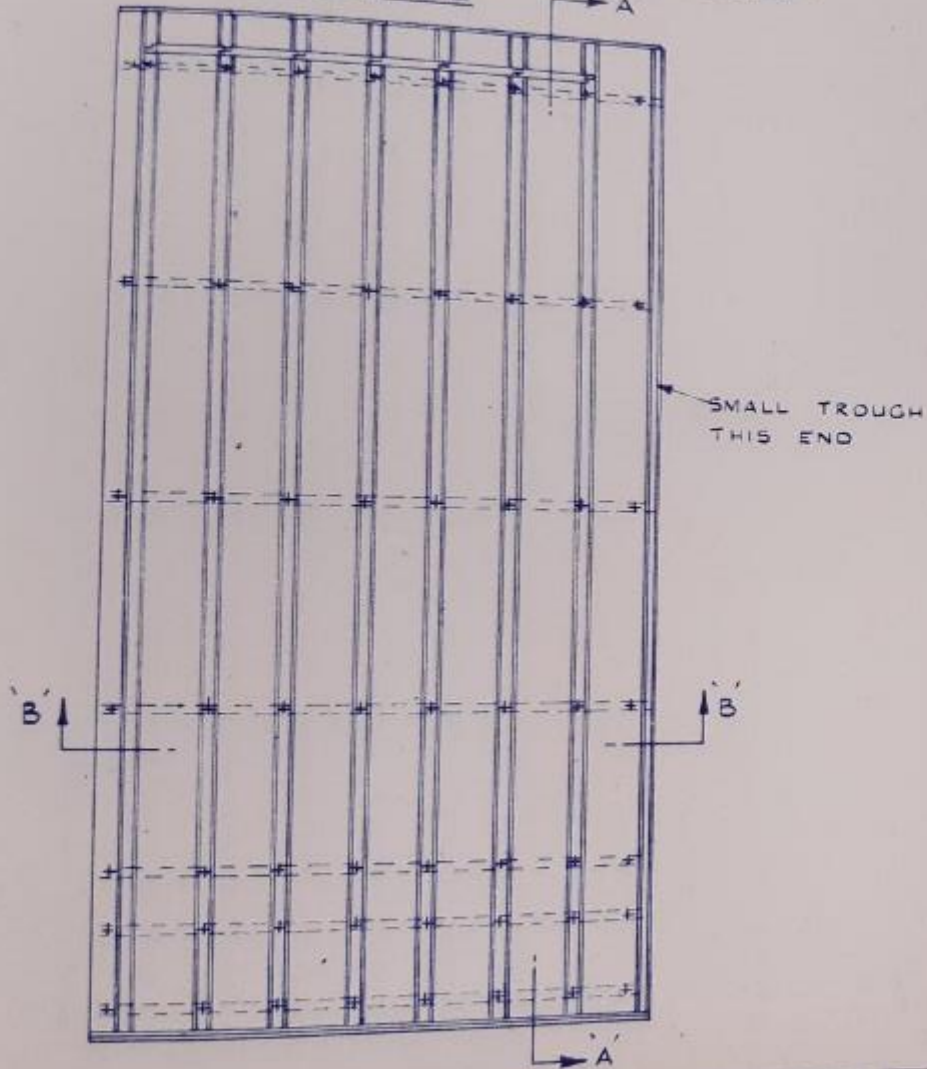
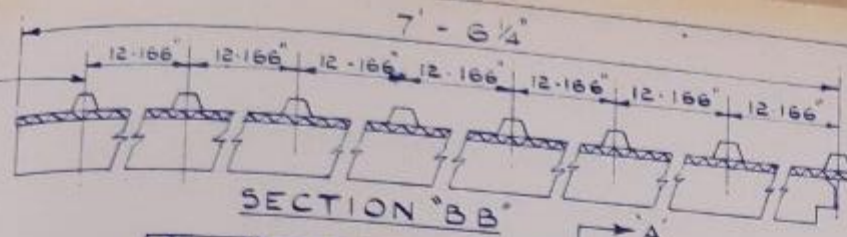
1554E

HAWKSLEY
HAWKSLEY

CONSTRUCTIONS. HUCCLECOTE, GLOUCESTER.
SEMI-DETACHED BUNGALOW BLB/D. ASSY OF ROOF TRUSS.

DRG No
58054

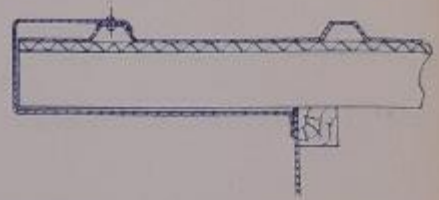
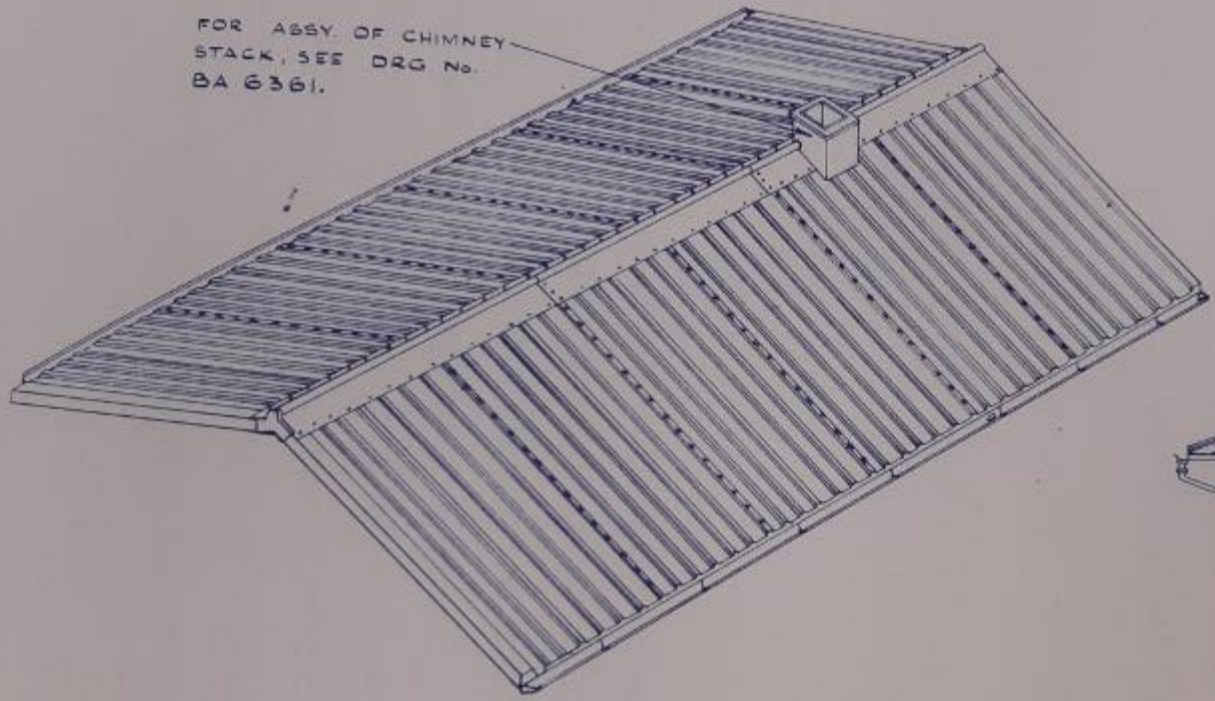
153.219/-



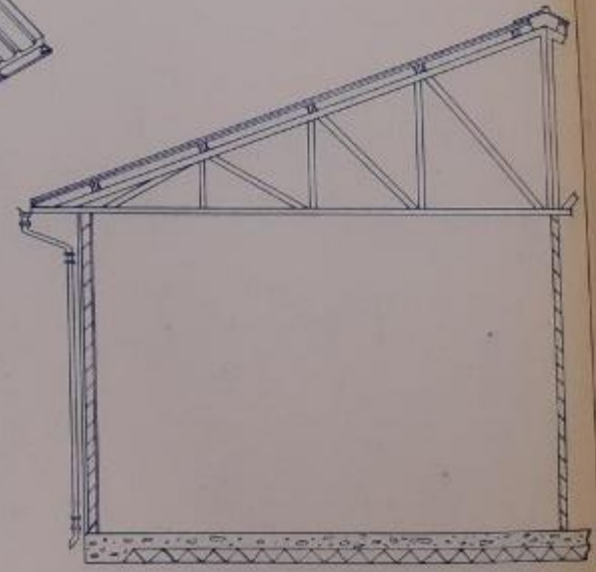
HAWKSLEY CONSTRUCTIONS. HUCCLECOTE, GLOUCESTER.
HAWKSLEY SEMI-DETACHED BUNGALOW BLB/D. GABLE END ROOF PANEL. R.H. AS DRAWN. L.H. OPP. HAND.

DRG No
S.8058

FOR ASSY. OF CHIMNEY
STACK, SEE DRG No.
BA 6361.



SCRAP DETAIL OF BARCE PLATE ASSY



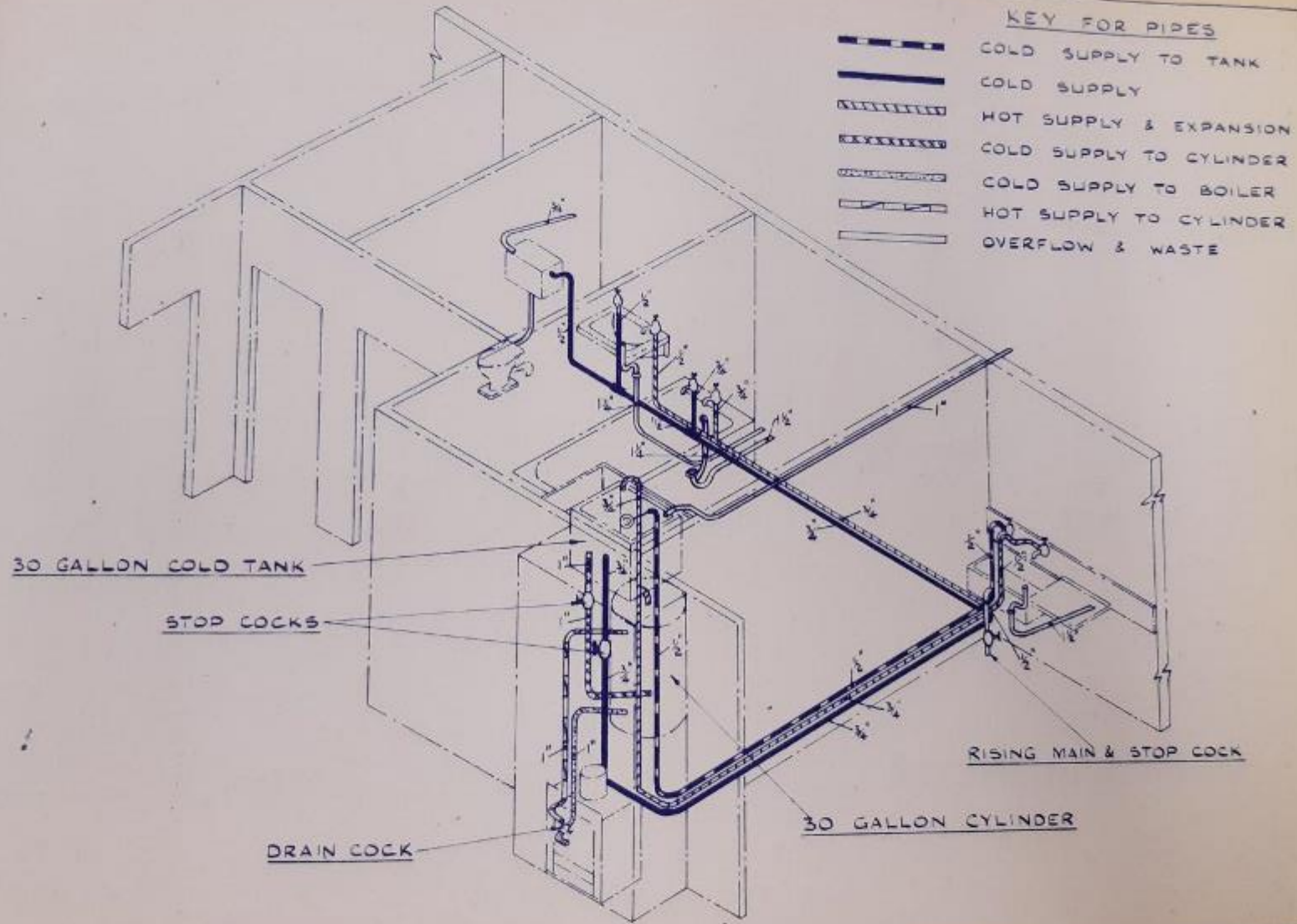
SECTION THROUGH TRUSS

ISSUE

HAWKSLEY CONSTRUCTIONS. HUCCLECOTE, GLOUCESTER.
HAWKSLEY SEMI-DETACHED BUNGALOW BLB/D ASSY OF ROOF PANELS ETC.

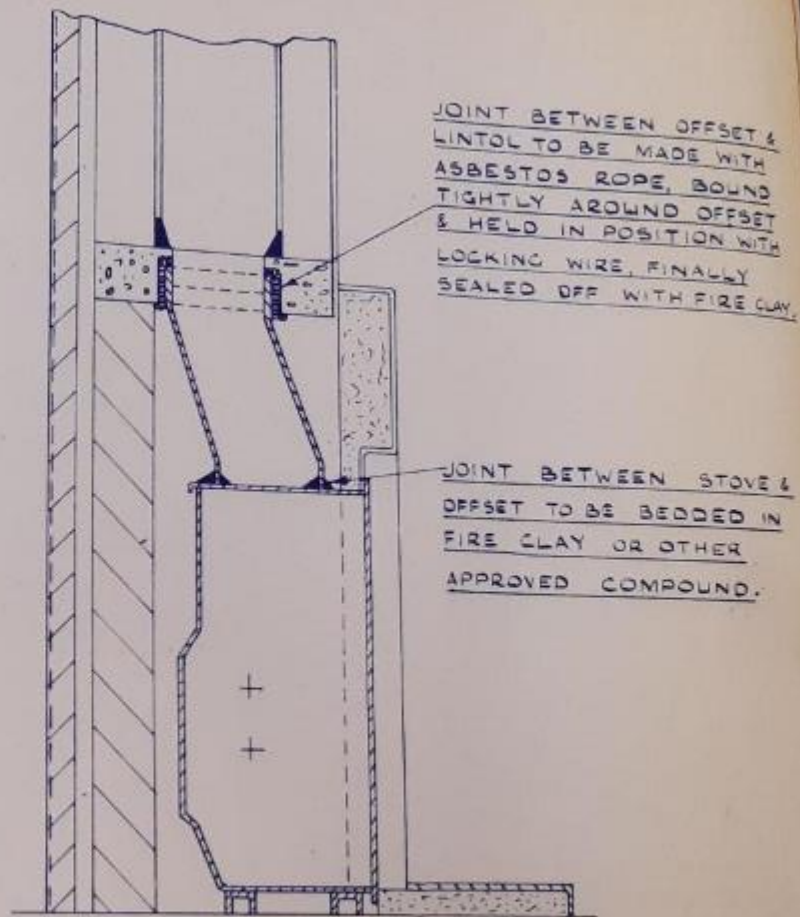
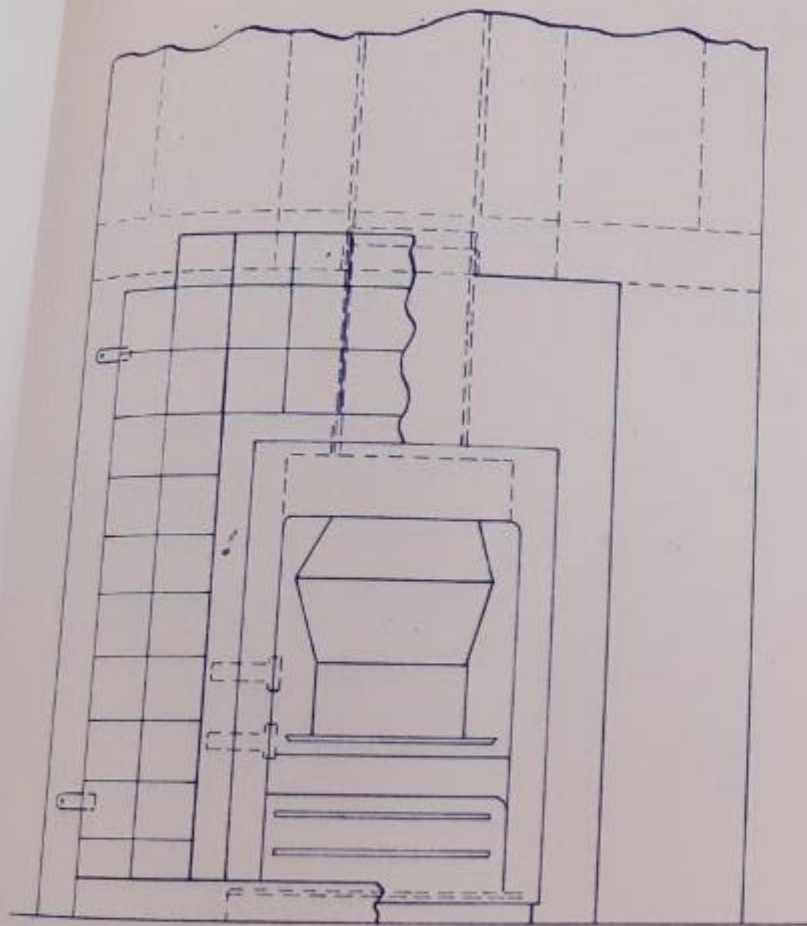
R.H. AS DRAWN
L.H. OPP. HAND

DRG No.
S.8057



HAWKSLEY CONSTRUCTIONS. HUCCLECOTE, GLOUCESTER
 HAWKSLEY SEMI-DETACHED BUNGALOW BLB/D. PLUMBING LAYOUT R.H. AS DRAWN. L.H. OPP. HAND.

DRG
 S.8063

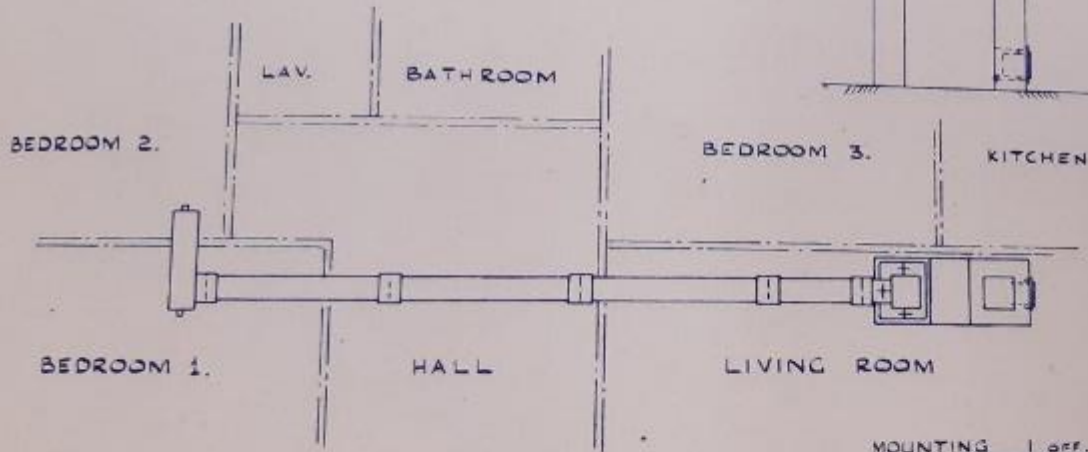
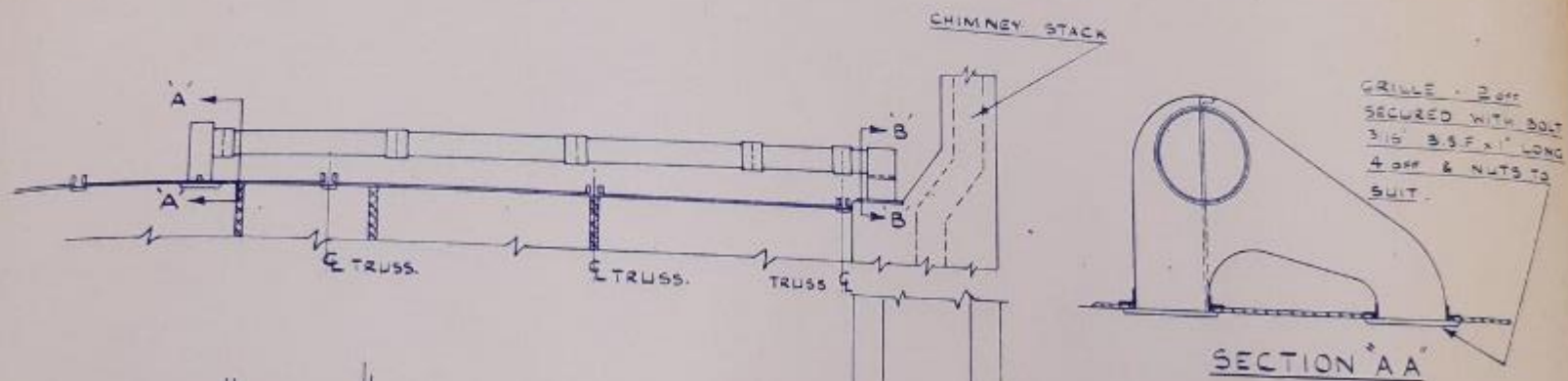


JOINT BETWEEN OFFSET &
LINTOL TO BE MADE WITH
ASBESTOS ROPE, BOUND
TIGHTLY AROUND OFFSET
& HELD IN POSITION WITH
LOCKING WIRE, FINALLY
SEALED OFF WITH FIRE CLAY.

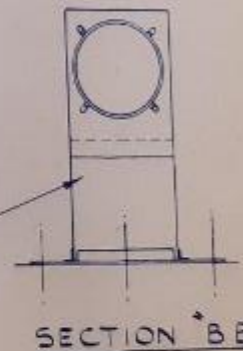
JOINT BETWEEN STOVE &
OFFSET TO BE BEDDED IN
FIRE CLAY OR OTHER
APPROVED COMPOUND.

HAWKSLEY CONSTRUCTIONS. HUCCLECOTE GLOUCESTER
HAWKSLEY SEMI-DETACHED BUNGALOW BL8/D. ASSY OF FIREPLACE & SURROUNDS

DRG No.
S. 8064

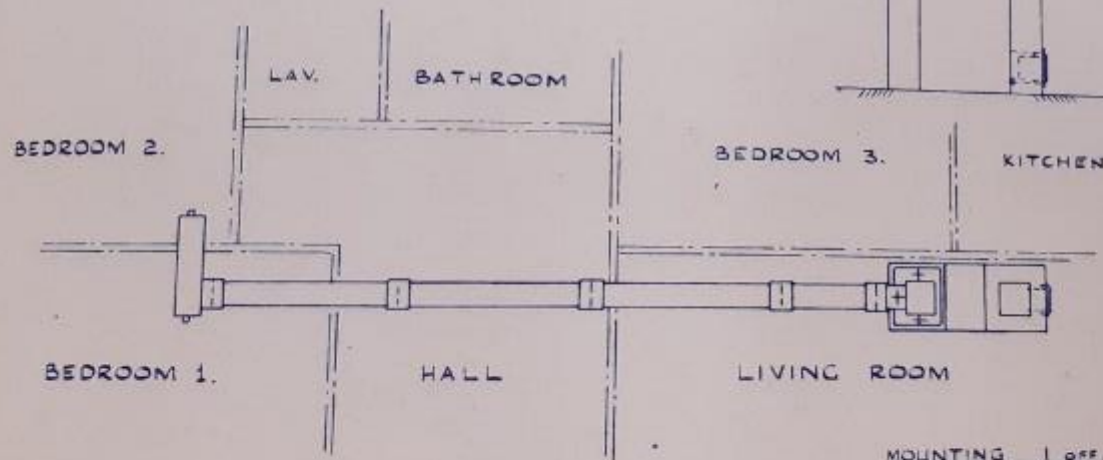
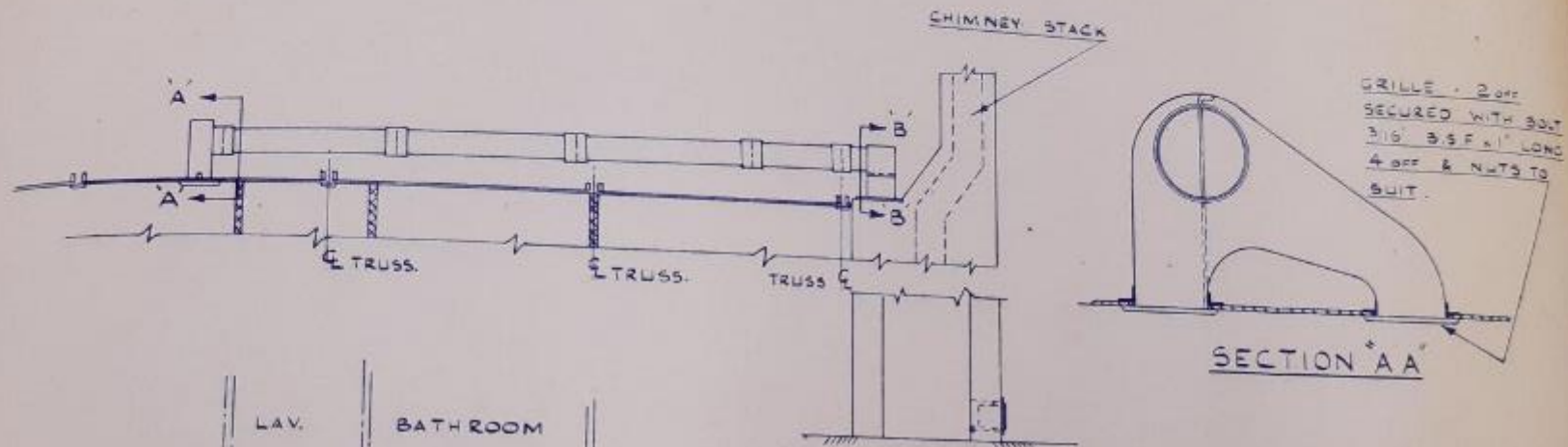


MOUNTING 1 OFF.
 SET IN MASTIC & BOLTED
 TO CHIMNEY STACK
 WITH BOLTS PROVIDED
 IN STACK.

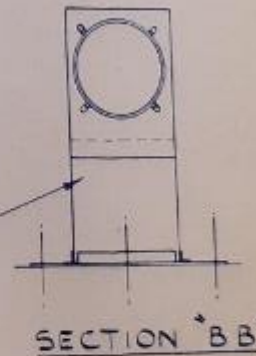


HAWKSLEY CONSTRUCTIONS. HUCCLECOTE, GLOUCESTER.
 HAWKSLEY SEMI-DETACHED BUNGALOW 3L8/D. INSTALLATION OF CONVECTION HEATING

DRG NO.
 5.8065

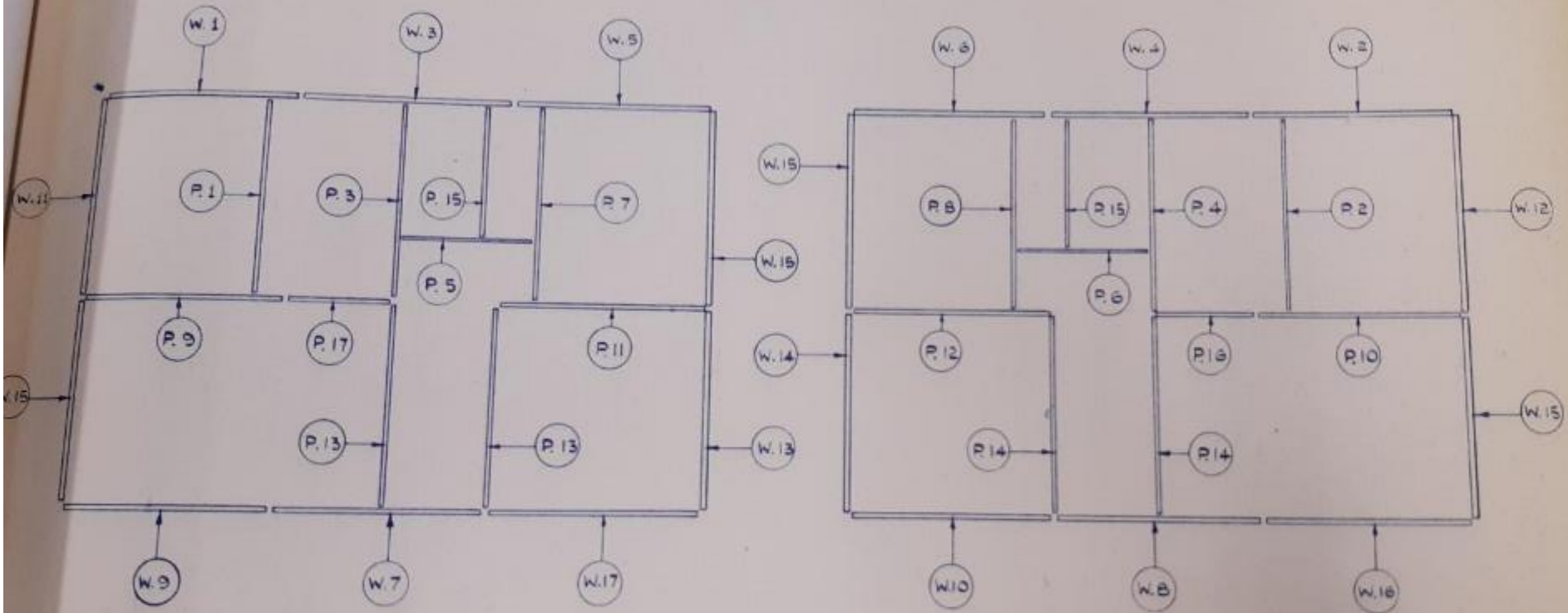


MOUNTING 1 OFF.
 SET IN MASTIC & BOLTED
 TO CHIMNEY STACK
 WITH BOLTS PROVIDED
 IN STACK.



HAWKSLEY CONSTRUCTIONS. HUCCLECOTE, GLOUCESTER.
 HAWKSLEY SEMI-DETACHED BUNGALOW 318/D. INSTALLATION OF CONVECTION HEATING

DRG No.
 5.8065



L. H. BUNGALOW

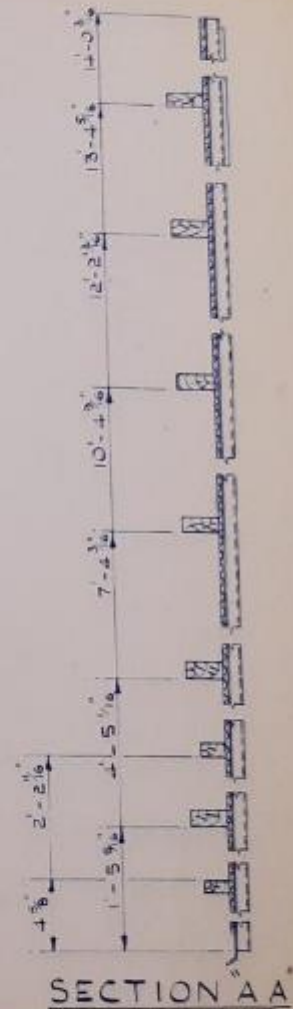
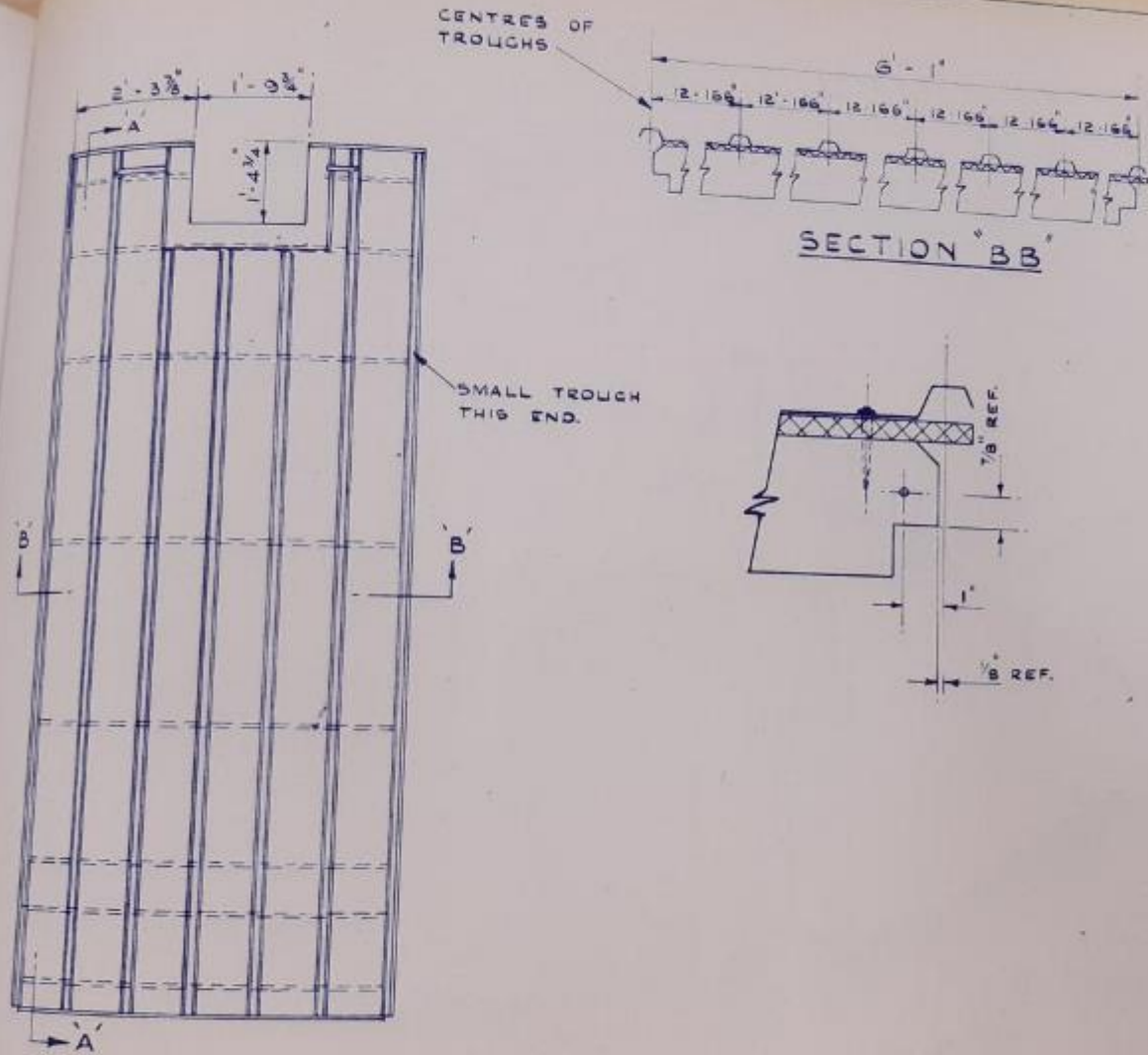
R. H. BUNGALOW

HAWKSLEY CONSTRUCTIONS. HUCCLECOTE, GLOUCESTER.

HAWKSLEY SEMI-DETACHED BUNGALOW BLB/D. L&R. KEY TO WALLS & PARTITIONS

DRG No

S. 8031

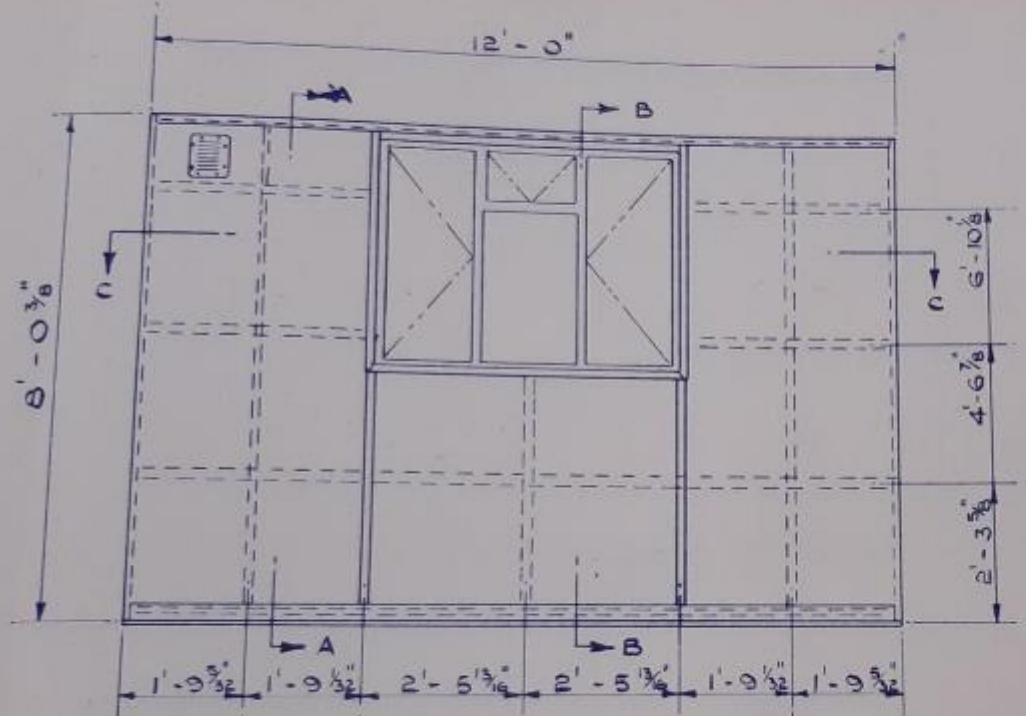


SECTION AA

HAWKSLEY CONSTRUCTIONS. HUCCLECOTE, GLOUCESTER.
 HAWKSLEY SEMI-DETACHED BUNGALOW BLB/D. ASSY OF R.H. CHIMNEY ROOF PANEL.

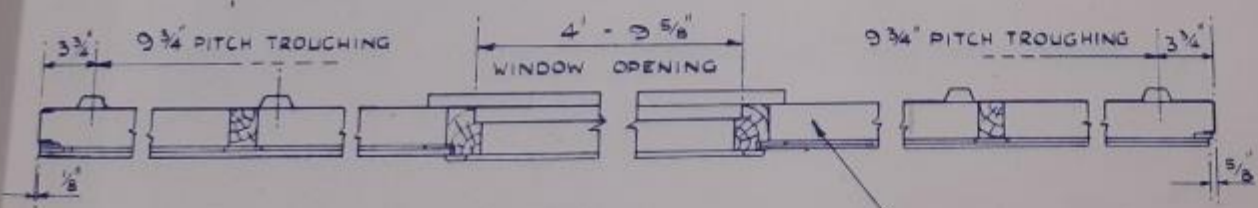
DRG NO
 S.8062

322.965/-



SECTION AA

SECTION BB

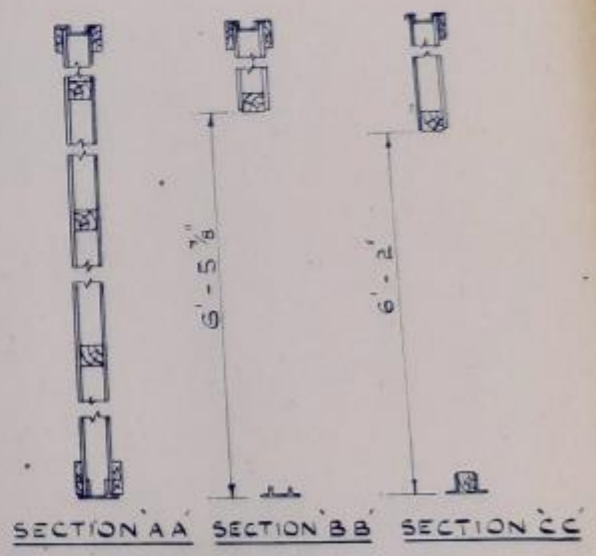
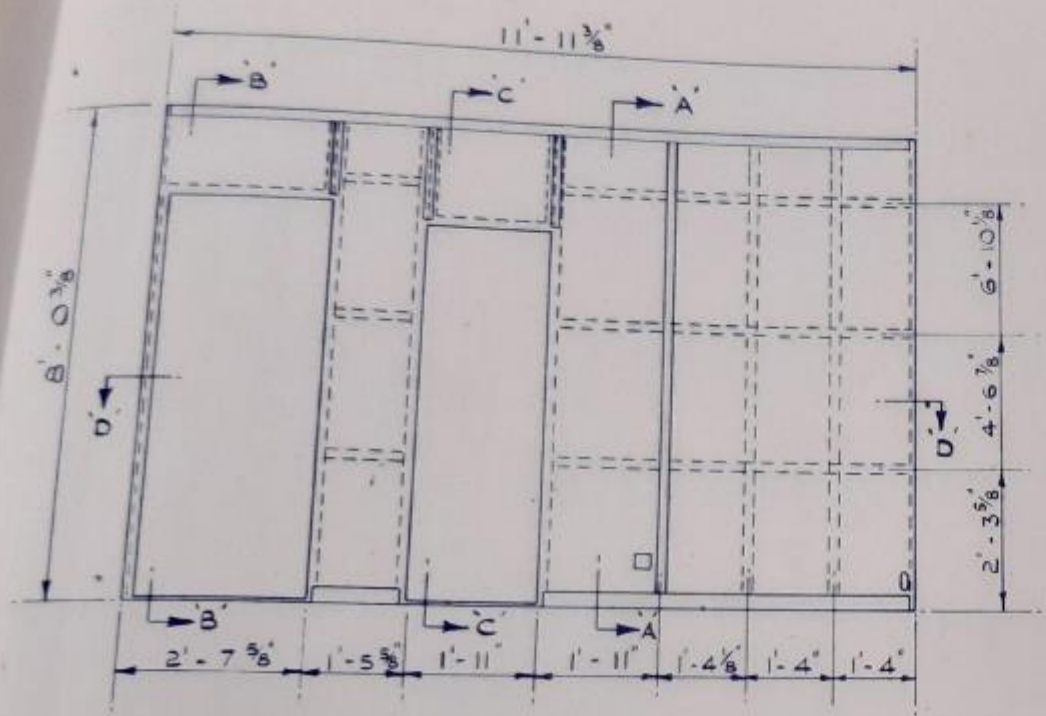


SECTION CC

3 LAYERS OF
GLASS WOOL
INSULATION

WINDOW No. ND 4 F

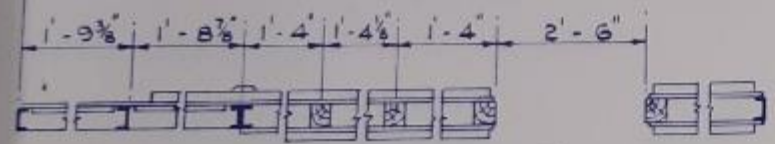
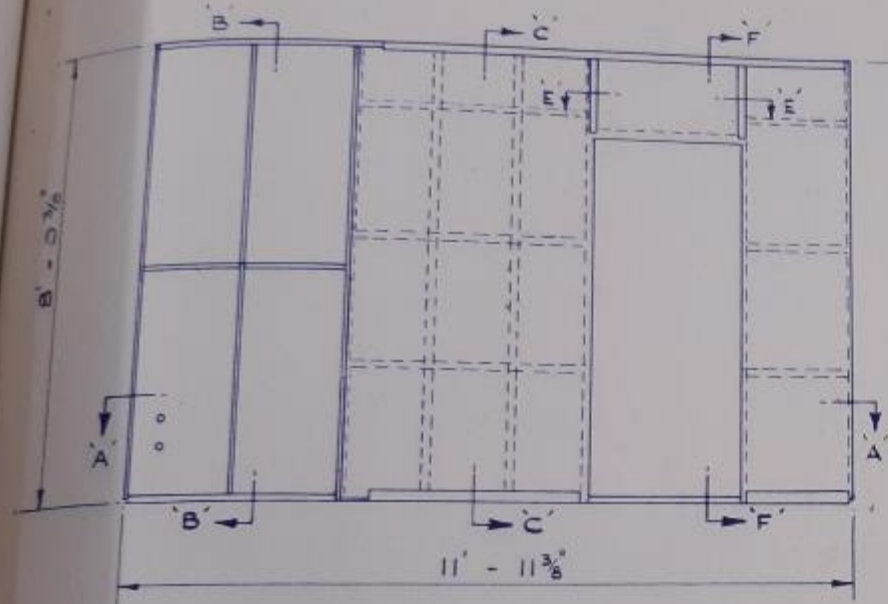
15746/-



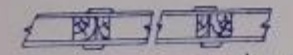
HAWKSLEY CONSTRUCTIONS. HULLCOTE, GLOUCESTER.
HAWKSLEY SEMI-DETACHED BUNGALOW BLB/D. PART 4 AS DRAWN. PART 3 OPP HAND.

DWG No.
5.8042

183.291/-



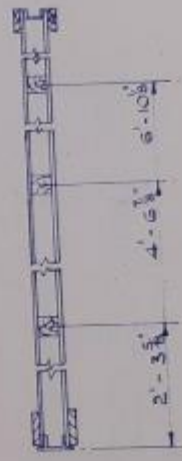
SECTION 'A A'



SECTION 'E E'



SECTION 'B B'



SECTION 'C C'

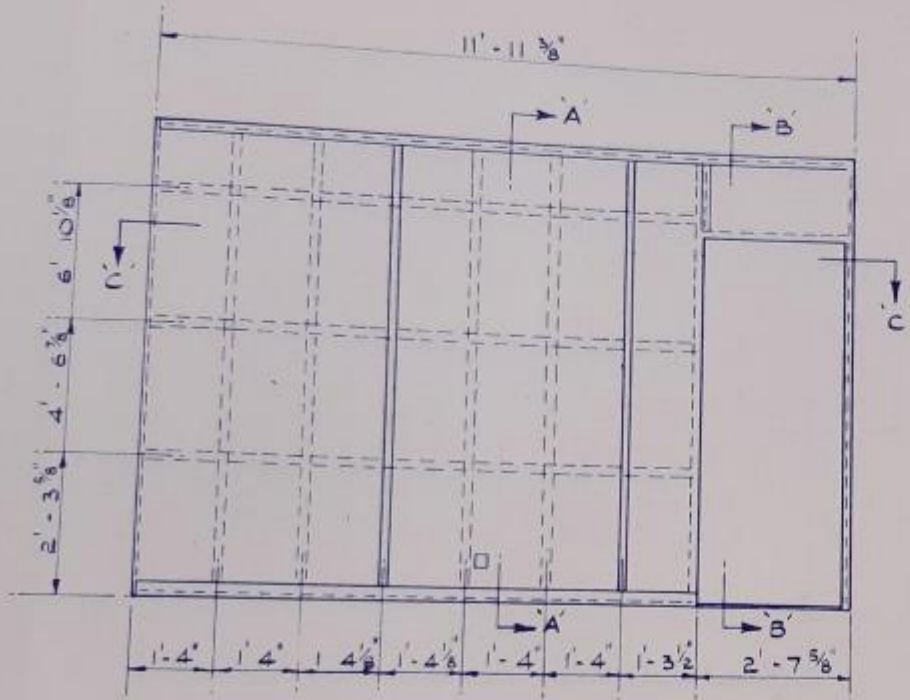


SECTION 'F F'

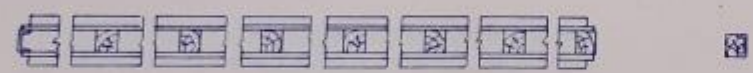
ISSUE			
A			

HAWKSLEY CONSTRUCTIONS. HUCCLECOTE, GLOUCESTER.
 HAWKSLEY SEMI-DETACHED BUNGALOW BLB/D. PART 10 AS DRAWN. PART 9 OPP. HAND.

DRC No
 S. 8045



SECTION 'A A' SECTION 'B B'

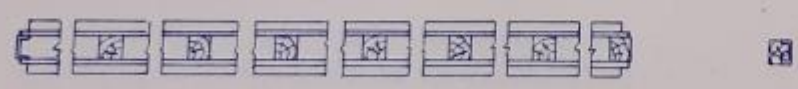
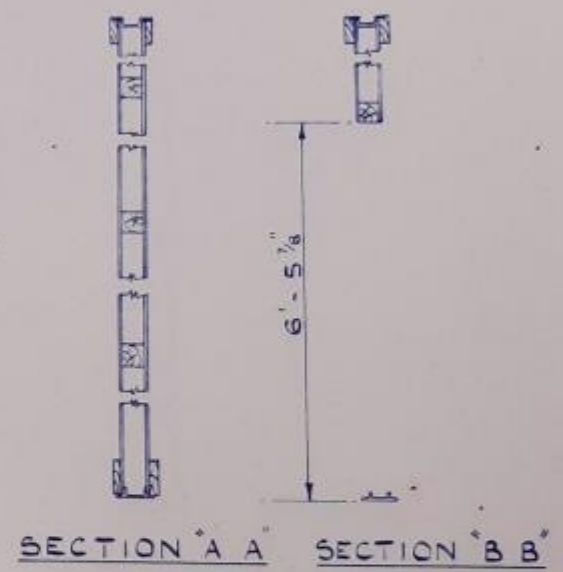
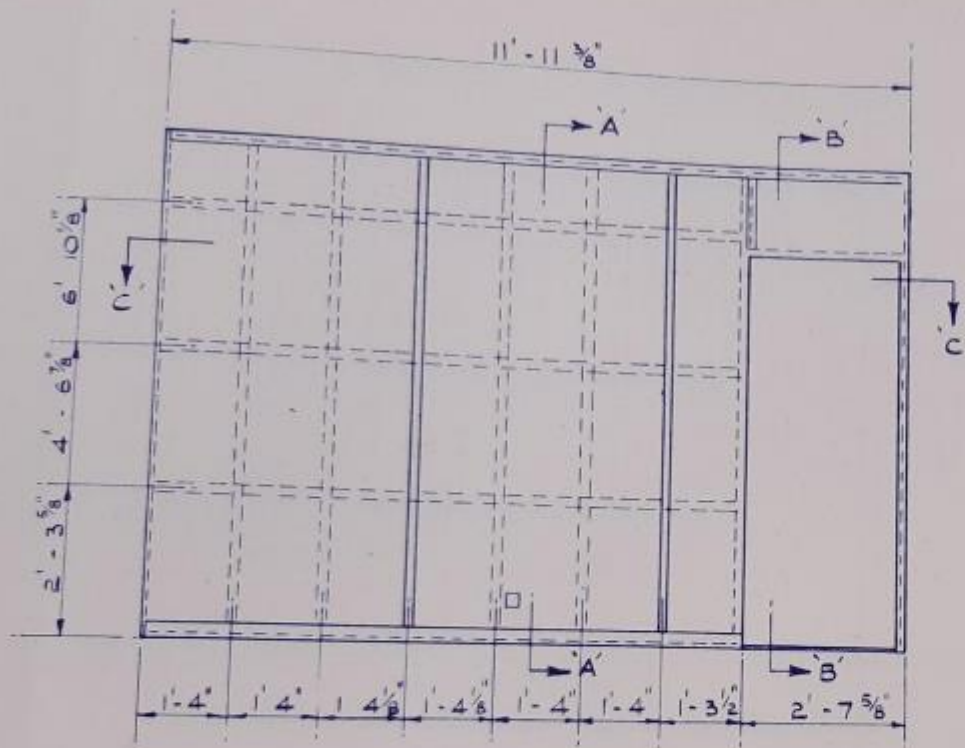


SECTION 'C C'

ISSUE				
A				

HAWKSLEY CONSTRUCTIONS. HULLCOTE, GLOUCESTER.
 HAWKSLEY SEMI-DETACHED BUNGALOW BLB/D. PARTⁿ 13 AS DRAWN, PARTⁿ 14 OPP. HAND

DRG No.
5.8047



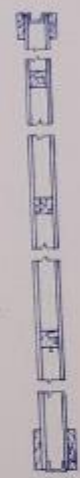
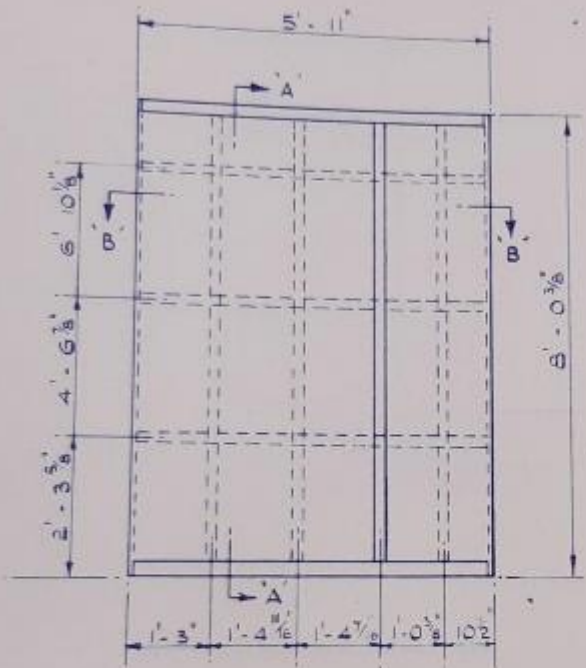
SECTION "CC"

ISSUE					

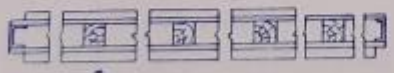
HAWKSLEY CONSTRUCTIONS. HULLCOTE, GLOUCESTER.
 HAWKSLEY SEMI-DETACHED BUNGALOW 3L8/D. PARTⁿ 13 AS DRAWN, PARTⁿ 14 OPP. HAND

DRG No.
5.8047

67-640/-

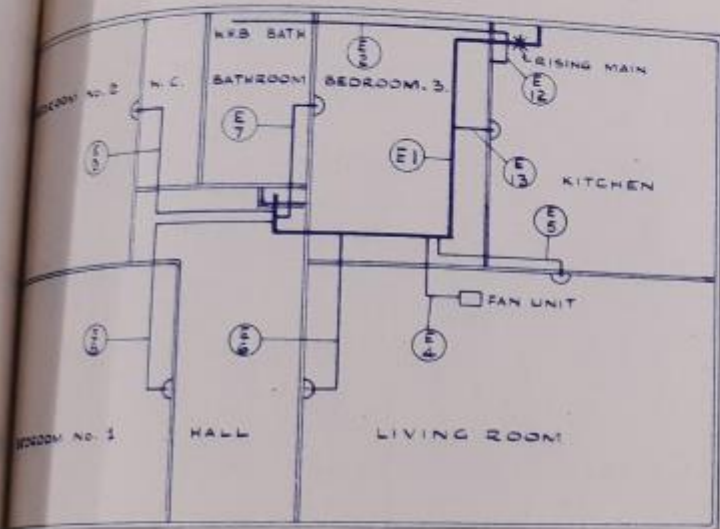


SECTION A A



SECTION B B

ISSUE		HAWKSLEY CONSTRUCTIONS. HUCCLECOTE, GLOUCESTER.		DRG No	
A		HAWKSLEY SEMI-DETACHED BUNGALOW BL B/D. PARTITION 16 AS DRAWN. PART 17 OPP. HAND		S.8049	



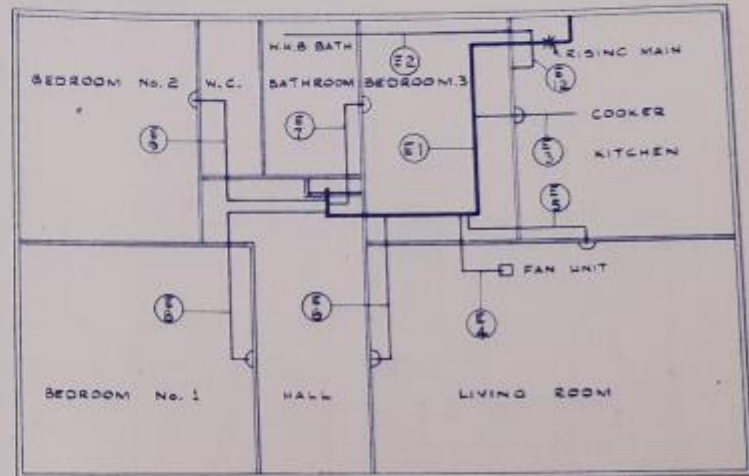
EARTHING SYSTEM - GAS & ELECTRIC

EARTH LEADS TINNED COPPER

E1 MAIN EARTH LEAD 7/044

E2 & 12 EARTH LEADS 7/044

E4, 5, 6, 7, 8, 9 & 13 EARTH LEADS 7/029



EARTHING SYSTEM - ALL ELECTRIC

EARTH LEADS TINNED COPPER

E1 MAIN EARTH LEAD 7/044

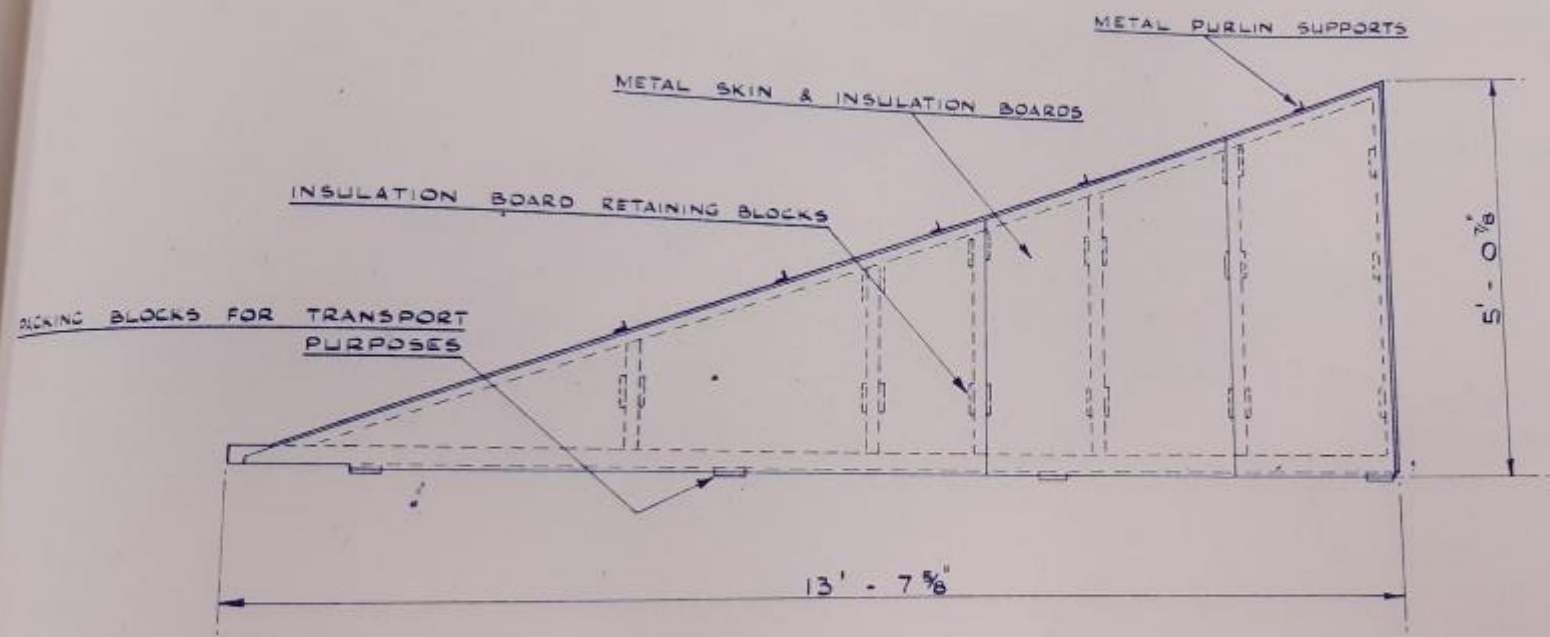
E2, 3 & 12 EARTH LEADS 7/044

E4, 5, 6, 7, 8 & 9 EARTH LEADS 7/029

HAWKSLEY CONSTRUCTIONS, HUCCLECOTE, GLOUCESTER.
 HAWKSLEY SEMI-DETACHED BUNGALOW BLB/D. L & R GENERAL ARRANGEMENT OF EARTHING SYSTEM

DRG No.
 S. 8052

94.527/-



ISSUE

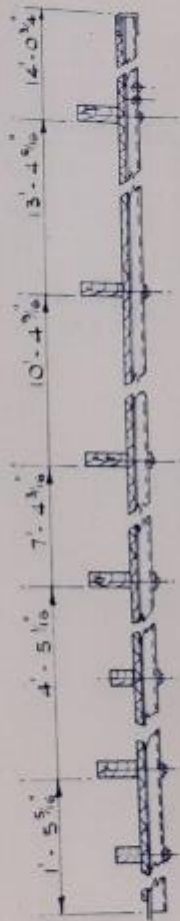
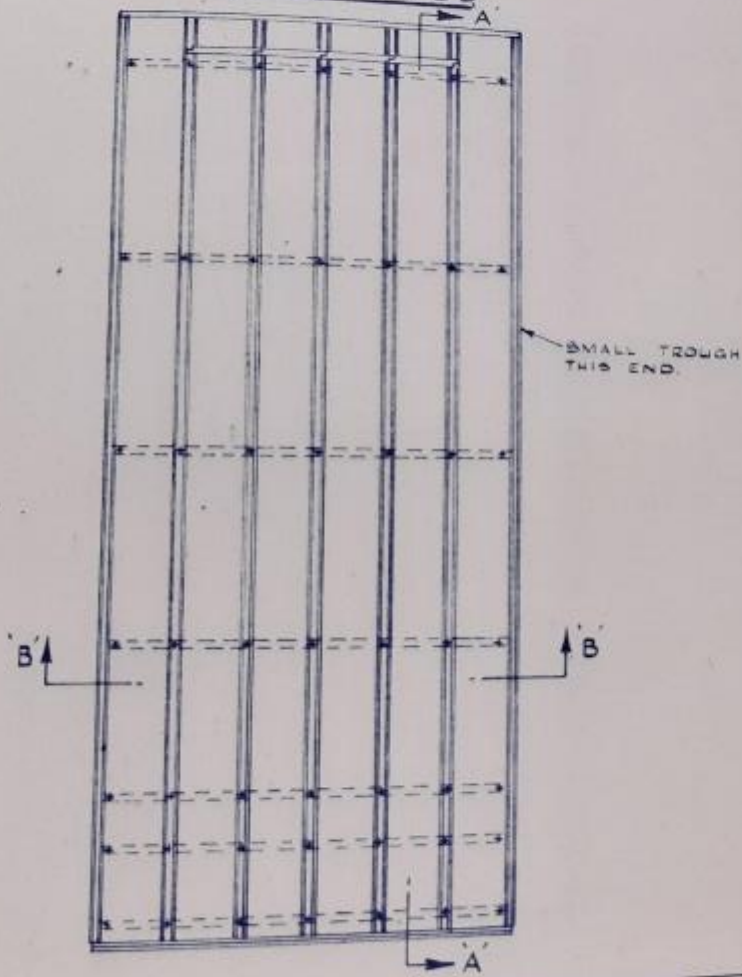
HAWKSLEY CONSTRUCTIONS, HULLCOTE, GLOUCESTER.
HAWKSLEY SEMI-DETACHED BUNGALOW BLB/D. ASSY OF GABLE END HALF TRUSS. L.H. AS DRAWN. R.H. OPP. HAND

DRG No.
5.8056

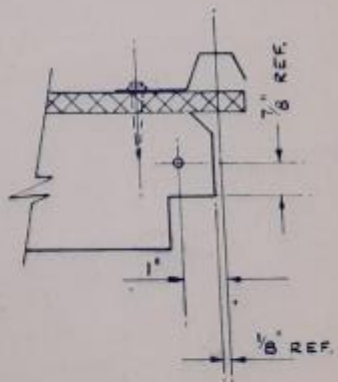
123-681/-



SECTION BB



SECTION AA

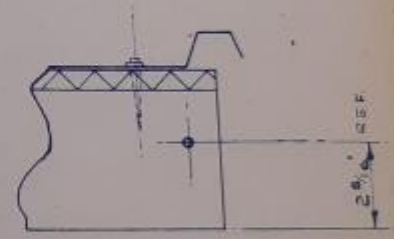
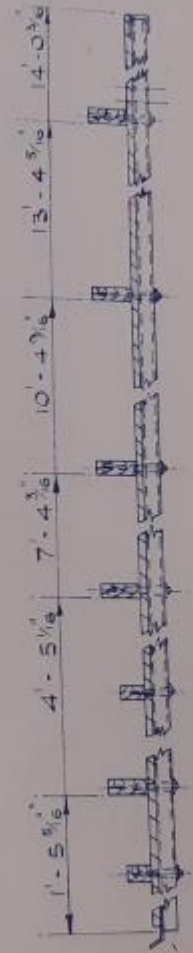
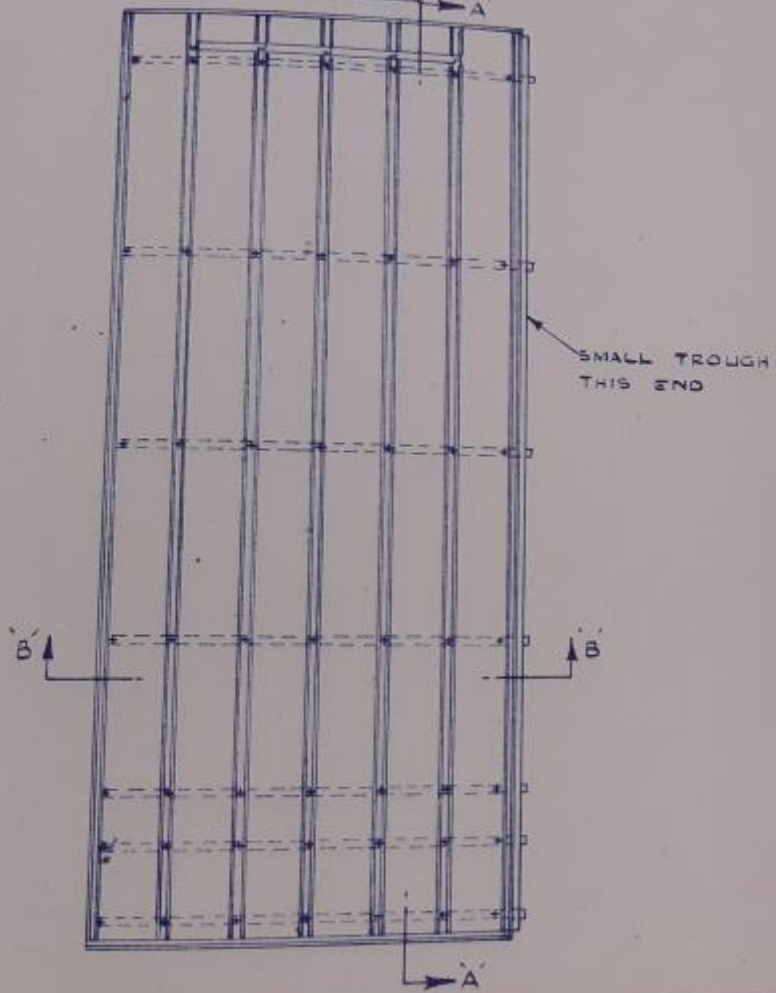
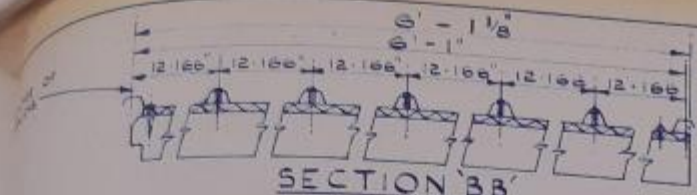


ISSUE

HAWKSLEY CONSTRUCTIONS, HULLCOTE, GLOUCESTER.
 HAWKSLEY SEMI-DETACHED BUNGALOW BLB/D. INTERMEDIATE ROOF PANEL.

DRG No
 S.8059

124-377/-

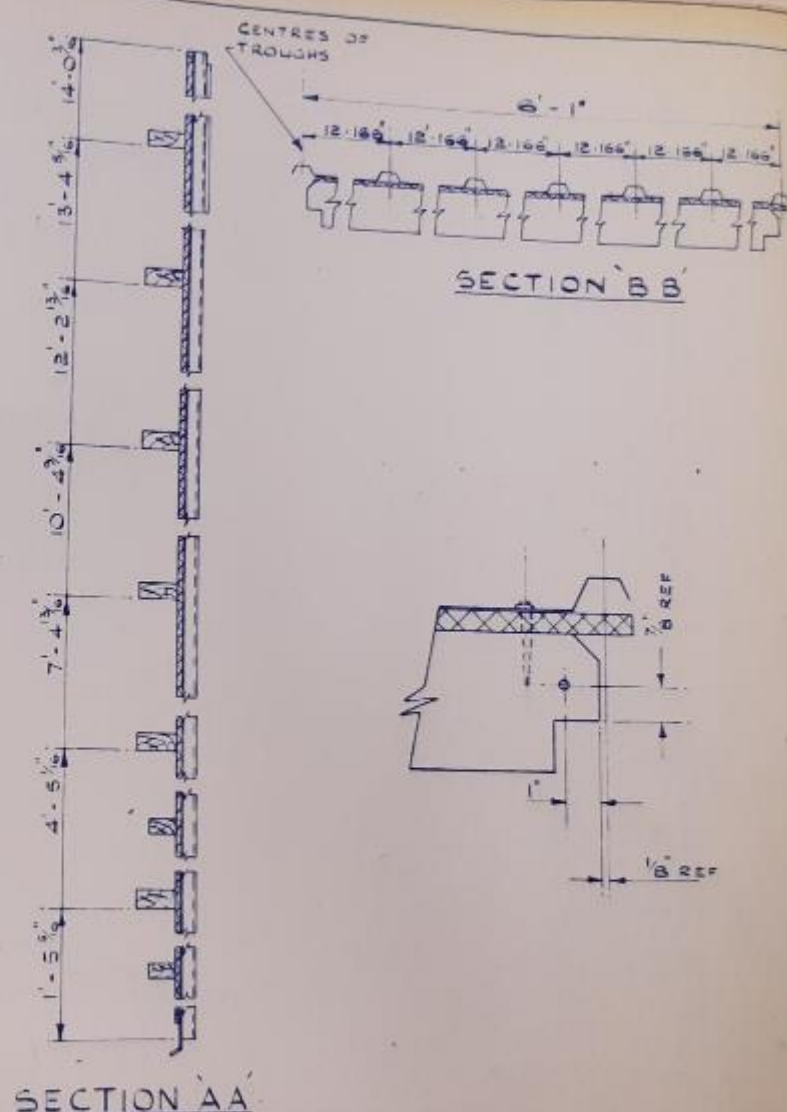
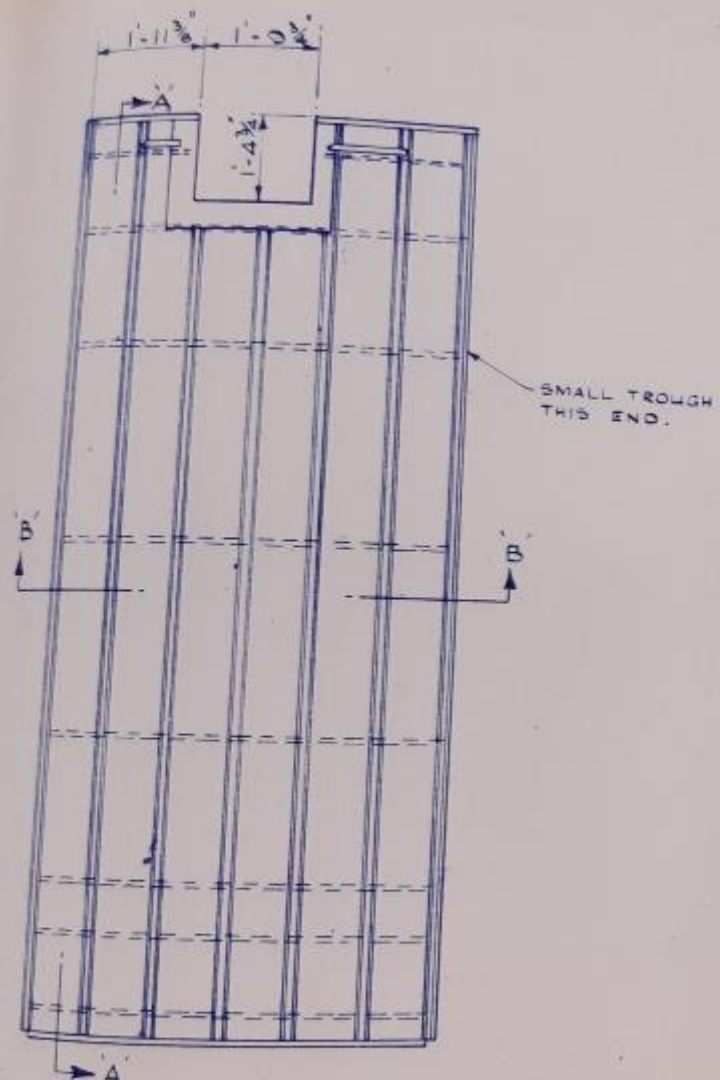


HAWKSLEY CONSTRUCTIONS.

HUCCLECOTE, GLOUCESTER.

DRG No 58060

HAWKSLEY SEMI-DETACHED BUNGALOW BLB/D. CENTRE ROOF PANEL. R.H. AS DRAWN. L.H. OPP. HAND.



HAWKSLEY CONSTRUCTIONS. HUCCLECOTE, GLOUCESTER.
 HAWKSLEY SEMI-DETACHED BUNGALOW BLB/D. ASSY OF L.H. CHIMNEY ROOF PANEL.

DRG No.
 S.8061